

Product datasheet for **TA381727S**

SLIT1 Rabbit Polyclonal Antibody

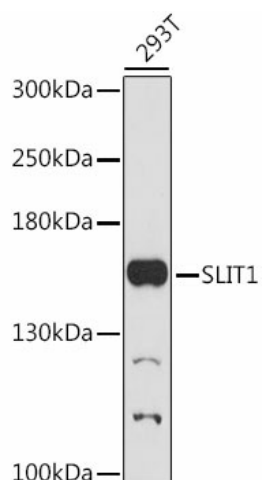
Product data:

Product Type:	Primary Antibodies
Applications:	ELISA, WB
Recommended Dilution:	WB, 1:500 - 1:2000 ELISA, Recommended starting concentration is 1 µg/mL. Please optimize the concentration based on your specific assay requirements.
Reactivity:	Human
Modifications:	Unmodified
Host:	Rabbit
Isotype:	IgG
Clonality:	Polyclonal
Formulation:	Buffer: PBS with 0.02% sodium azide, 50% glycerol, pH 7.3.
Concentration:	lot specific
Purification:	Affinity purification
Conjugation:	Unconjugated
Storage:	Store at -20°C. Avoid freeze / thaw cycles.
Stability:	Shelf life: one year from despatch.
Predicted Protein Size:	168kDa
Gene Name:	slit guidance ligand 1
Database Link:	Entrez Gene 6585 Human O75093
Background:	Enables Roundabout binding activity. Involved in axon extension involved in axon guidance; motor neuron axon guidance; and negative chemotaxis. Predicted to be located in extracellular region. Predicted to be active in extracellular space.
Synonyms:	KIAA0813; MEGF4; MGC164811; SLIL1; Slit-1; SLIT3



[View online »](#)

Product images:



Western blot analysis of lysates from 293T cells