

Product datasheet for **TA381725S**

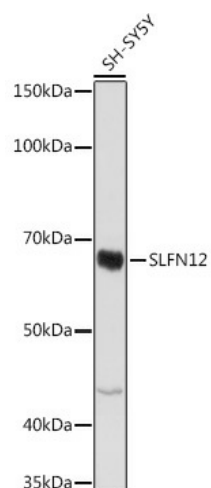
SLFN12 Rabbit Polyclonal Antibody

Product data:

Product Type:	Primary Antibodies
Applications:	ELISA, WB
Recommended Dilution:	WB, 1:500 - 1:1000 ELISA, Recommended starting concentration is 1 µg/mL. Please optimize the concentration based on your specific assay requirements.
Reactivity:	Human
Modifications:	Unmodified
Host:	Rabbit
Isotype:	IgG
Clonality:	Polyclonal
Formulation:	Buffer: PBS with 0.02% sodium azide, 50% glycerol, pH 7.3.
Concentration:	lot specific
Purification:	Affinity purification
Conjugation:	Unconjugated
Storage:	Store at -20°C. Avoid freeze / thaw cycles.
Stability:	Shelf life: one year from despatch.
Predicted Protein Size:	67kDa
Gene Name:	schlafen family member 12
Database Link:	Entrez Gene 55106 Human Q8IYM2
Background:	Predicted to act upstream of or within negative regulation of cell population proliferation.
Synonyms:	FLJ10260; OTTHUMP00000163884; SLFN3

[View online »](#)

Product images:



Western blot analysis of lysates from SH-SY5Y cells