

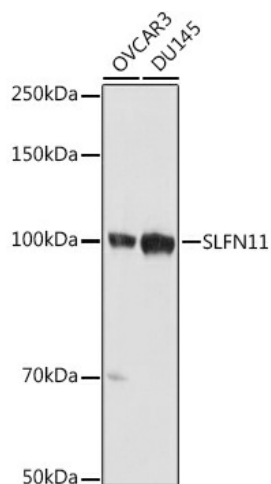
Product datasheet for TA381724S

SLFN11 Rabbit Polyclonal Antibody

Product data:

Product Type:	Primary Antibodies
Applications:	ELISA, WB
Recommended Dilution:	WB, 1:500 - 1:1000 ELISA, Recommended starting concentration is 1 µg/mL. Please optimize the concentration based on your specific assay requirements.
Reactivity:	Human
Modifications:	Unmodified
Host:	Rabbit
Isotype:	IgG
Clonality:	Polyclonal
Formulation:	Buffer: PBS with 0.02% sodium azide, 50% glycerol, pH 7.3.
Concentration:	lot specific
Purification:	Affinity purification
Conjugation:	Unconjugated
Storage:	Store at -20°C. Avoid freeze / thaw cycles.
Stability:	Shelf life: one year from despatch.
Predicted Protein Size:	103kDa
Gene Name:	schlafen family member 11
Database Link:	Entrez Gene 91607 Human Q7Z7L1
Background:	Enables tRNA binding activity. Involved in several processes, including defense response to virus; negative regulation of G1/S transition of mitotic cell cycle; and replication fork arrest. Located in cytosol; nucleoplasm; and site of DNA damage.
Synonyms:	FLJ34922; OTTHUMP00000163875; SLFN8/9


[View online »](#)

Product images:


Western blot analysis of various lysates using SLFN11 Rabbit pAb ([TA381724]) at 1:1000 dilution.

Secondary antibody: HRP-conjugated Goat anti-Rabbit IgG (H+L) (AS014) at 1:10000 dilution.

Lysates/proteins: 25µg per lane.

Blocking buffer: 3% nonfat dry milk in TBST.

Detection: ECL Basic Kit (RM00020).

Exposure time: 10s.