

Product datasheet for **TA381722**

SLCO2B1 Rabbit Polyclonal Antibody

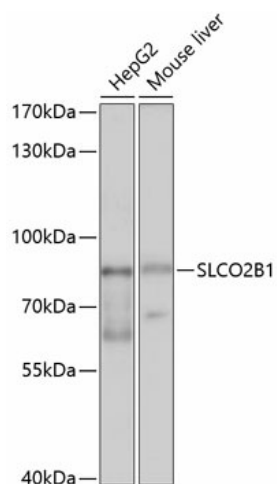
Product data:

Product Type:	Primary Antibodies
Applications:	WB
Recommended Dilution:	WB,1:500 - 1:2000
Reactivity:	Human, Mouse
Modifications:	Unmodified
Host:	Rabbit
Isotype:	IgG
Clonality:	Polyclonal
Immunogen:	Recombinant fusion protein containing a sequence corresponding to amino acids 130-210 of human SLCO2B1 (NP_009187.1).
Formulation:	Buffer: PBS with 0.02% sodium azide,50% glycerol,pH7.3.
Concentration:	lot specific
Purification:	Affinity purification
Conjugation:	Unconjugated
Storage:	Store at -20°C. Avoid freeze / thaw cycles.
Stability:	Shelf life: one year from despatch.
Predicted Protein Size:	52kDa/61kDa/74kDa/76kDa
Gene Name:	solute carrier organic anion transporter family member 2B1
Database Link:	Entrez Gene 11309 Human O94956
Background:	This locus encodes a member of the organic anion-transporting polypeptide family of membrane proteins. The protein encoded by this locus may function in regulation of placental uptake of sulfated steroids. Alternatively spliced transcript variants have been described.
Synonyms:	DKFZp686E0517; KIAA0880; OATP-B; OATP-RP2; OATP2B1; OATPB; OATPRP2; SLC21A9



[View online »](#)

Product images:



Western blot analysis of extracts of various cell lines, using SLCO2B1 antibody (TA381722) at 1:1000 dilution. | Secondary antibody: HRP Goat Anti-Rabbit IgG (H+L) at 1:10000 dilution. | Lysates/proteins: 25ug per lane. | Blocking buffer: 3% nonfat dry milk in TBST. | Detection: ECL Basic Kit . | Exposure time: 8s.