

## Product datasheet for **TA381717**

### SLC9A9 Rabbit Polyclonal Antibody

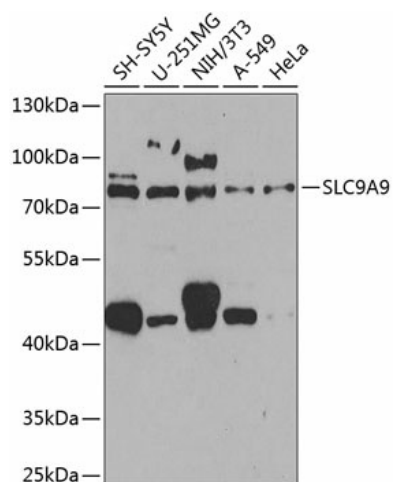
#### Product data:

Product Type:	Primary Antibodies
Applications:	WB
Recommended Dilution:	WB,1:500 - 1:2000
Reactivity:	Human, Mouse
Modifications:	Unmodified
Host:	Rabbit
Isotype:	IgG
Clonality:	Polyclonal
Immunogen:	Recombinant fusion protein containing a sequence corresponding to amino acids 1-130 of human SLC9A9 (NP_775924.1).
Formulation:	Buffer: PBS with 0.02% sodium azide,50% glycerol,pH7.3.
Concentration:	lot specific
Purification:	Affinity purification
Conjugation:	Unconjugated
Storage:	Store at -20°C. Avoid freeze / thaw cycles.
Stability:	Shelf life: one year from despatch.
Predicted Protein Size:	72kDa
Gene Name:	solute carrier family 9 member A9
Database Link:	<a href="#">Entrez Gene 285195 Human Q8IVB4</a>
Background:	This gene encodes a sodium/proton exchanger that is a member of the solute carrier 9 protein family. The encoded protein localizes to the late recycling endosomes and may play an important role in maintaining cation homeostasis. Mutations in this gene are associated with autism susceptibility 16 and attention-deficit/hyperactivity disorder.
Synonyms:	FLJ35613; Nbla00118; NHE-9; NHE9



[View online »](#)

## Product images:



Western blot analysis of extracts of various cell lines, using SLC9A9 antibody (TA381717) at 1:1000 dilution. | Secondary antibody: HRP Goat Anti-Rabbit IgG (H+L) at 1:10000 dilution. | Lysates/proteins: 25ug per lane. | Blocking buffer: 3% nonfat dry milk in TBST. | Detection: ECL Basic Kit . | Exposure time: 90s.