

Product datasheet for **TA381712**

SLC9A3 Rabbit Polyclonal Antibody

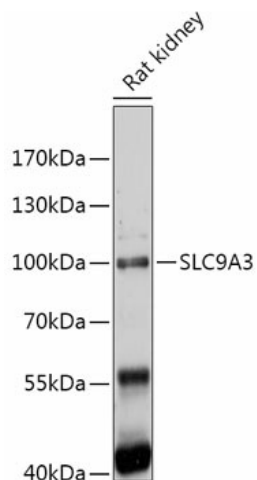
Product data:

Product Type:	Primary Antibodies
Applications:	WB
Recommended Dilution:	WB,1:500 - 1:2000
Reactivity:	Rat
Modifications:	Unmodified
Host:	Rabbit
Isotype:	IgG
Clonality:	Polyclonal
Immunogen:	Recombinant fusion protein containing a sequence corresponding to amino acids 460-600 of human SLC9A3 (NP_004165.2).
Formulation:	Buffer: PBS with 0.02% sodium azide,50% glycerol,pH7.3.
Concentration:	lot specific
Purification:	Affinity purification
Conjugation:	Unconjugated
Storage:	Store at -20°C. Avoid freeze / thaw cycles.
Stability:	Shelf life: one year from despatch.
Gene Name:	solute carrier family 9 member A3
Database Link:	P48764
Background:	The protein encoded by this gene is an epithelial brush border Na/H exchanger that uses an inward sodium ion gradient to expel acids from the cell. Defects in this gene are a cause of congenital secretory sodium diarrhea. Pseudogenes of this gene exist on chromosomes 10 and 22. [provided by RefSeq, Mar 2016]
Synonyms:	MGC126718; MGC126720; NHE-3; NHE3



[View online »](#)

Product images:



Western blot analysis of extracts of Rat kidney, using SLC9A3 antibody (TA381712) at 1:1000 dilution. | Secondary antibody: HRP Goat Anti-Rabbit IgG (H+L) at 1:10000 dilution. | Lysates/proteins: 25ug per lane. | Blocking buffer: 3% nonfat dry milk in TBST. | Detection: ECL Enhanced Kit . | Exposure time: 120s.