

## Product datasheet for **TA381711**

### SLC8A3 Rabbit Polyclonal Antibody

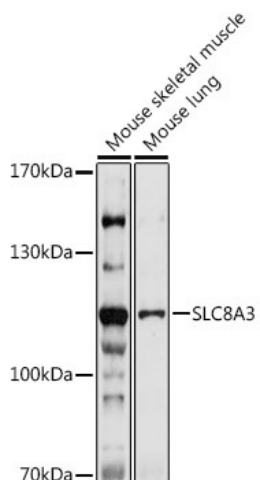
#### Product data:

Product Type:	Primary Antibodies
Applications:	WB
Recommended Dilution:	WB,1:500 - 1:2000
Reactivity:	Mouse
Host:	Rabbit
Isotype:	IgG
Clonality:	Polyclonal
Immunogen:	Recombinant protein of human SLC8A3.
Formulation:	Buffer: PBS with 0.02% sodium azide,50% glycerol,pH7.3.
Concentration:	lot specific
Purification:	Affinity purification
Conjugation:	Unconjugated
Storage:	Store at -20°C. Avoid freeze / thaw cycles.
Stability:	Shelf life: one year from despatch.
Gene Name:	solute carrier family 8 member A3
Database Link:	<a href="#">P57103</a>
Background:	This gene encodes a member of the sodium/calcium exchanger integral membrane protein family. Na <sup>+</sup> /Ca <sup>2+</sup> exchange proteins are involved in maintaining Ca <sup>2+</sup> homeostasis in a wide variety of cell types. The protein is regulated by intracellular calcium ions and is found in both the plasma membrane and intracellular organellar membranes, where exchange of Na <sup>+</sup> for Ca <sup>2+</sup> occurs in an electrogenic manner. Alternative splicing has been observed for this gene and multiple variants have been described. [provided by RefSeq, Aug 2013]
Synonyms:	NCX3



[View online »](#)

## Product images:



Western blot analysis of extracts of various cell lines, using SLC8A3 antibody (TA381711) at 1:1000 dilution. | Secondary antibody: HRP Goat Anti-Rabbit IgG (H+L) at 1:10000 dilution. | Lysates/proteins: 25ug per lane. | Blocking buffer: 3% nonfat dry milk in TBST. | Detection: ECL Enhanced Kit. | Exposure time: 120s.