

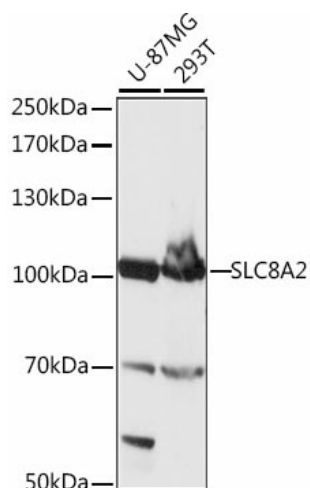
Product datasheet for **TA381710S**

SLC8A2 Rabbit Polyclonal Antibody

Product data:

Product Type:	Primary Antibodies
Applications:	ELISA, WB
Recommended Dilution:	WB, 1:500 - 1:2000 ELISA, Recommended starting concentration is 1 µg/mL. Please optimize the concentration based on your specific assay requirements.
Reactivity:	Human
Modifications:	Unmodified
Host:	Rabbit
Isotype:	IgG
Clonality:	Polyclonal
Formulation:	Buffer: PBS with 0.02% sodium azide, 50% glycerol, pH 7.3.
Concentration:	lot specific
Purification:	Affinity purification
Conjugation:	Unconjugated
Storage:	Store at -20°C. Avoid freeze / thaw cycles.
Stability:	Shelf life: one year from despatch.
Predicted Protein Size:	100kDa
Gene Name:	solute carrier family 8 member A2
Database Link:	Entrez Gene 6543 Human Q9UPR5
Background:	Predicted to enable calcium:cation antiporter activity involved in regulation of postsynaptic cytosolic calcium ion concentration and calcium:sodium antiporter activity. Predicted to be involved in several processes, including inorganic cation transmembrane transport; learning or memory; and regulation of short-term neuronal synaptic plasticity. Predicted to act upstream of or within several processes, including modulation of chemical synaptic transmission; regulation of action potential firing pattern; and response to ischemia. Part of presynapse. Biomarker of Alzheimer's disease.
Synonyms:	KIAA1087; NCX2

[View online »](#)

Product images:


Western blot analysis of various lysates using SLC8A2 Rabbit pAb ([TA381710]) at 1:1000 dilution.

Secondary antibody: HRP-conjugated Goat anti-Rabbit IgG (H+L) (AS014) at 1:10000 dilution.

Lysates/proteins: 25µg per lane.

Blocking buffer: 3% nonfat dry milk in TBST.

Detection: ECL Basic Kit (RM00020).

Exposure time: 10s.