

## Product datasheet for **TA381710**

### SLC8A2 Rabbit Polyclonal Antibody

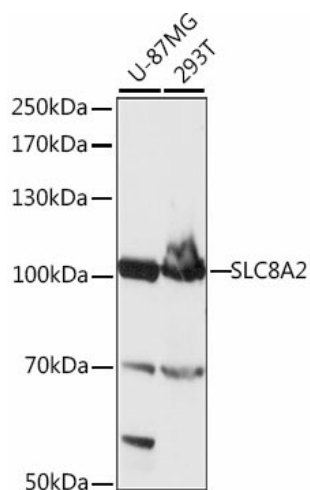
#### Product data:

Product Type:	Primary Antibodies
Applications:	WB
Recommended Dilution:	WB,1:500 - 1:2000
Reactivity:	Human
Modifications:	Unmodified
Host:	Rabbit
Isotype:	IgG
Clonality:	Polyclonal
Immunogen:	Recombinant fusion protein containing a sequence corresponding to amino acids 360-450 of human SLC8A2 (NP_055878.1).
Formulation:	Buffer: PBS with 0.02% sodium azide,50% glycerol,pH7.3.
Concentration:	lot specific
Purification:	Affinity purification
Conjugation:	Unconjugated
Storage:	Store at -20°C. Avoid freeze / thaw cycles.
Stability:	Shelf life: one year from despatch.
Predicted Protein Size:	100kDa
Gene Name:	solute carrier family 8 member A2
Database Link:	<a href="#">Entrez Gene 6543 Human Q9UPR5</a>
Background:	Mediates the electrogenic exchange of Ca <sup>2+</sup> against Na <sup>+</sup> ions across the cell membrane, and thereby contributes to the regulation of cytoplasmic Ca <sup>2+</sup> levels and Ca <sup>2+</sup> -dependent cellular processes. Contributes to cellular Ca <sup>2+</sup> homeostasis in excitable cells. Contributes to the rapid decrease of cytoplasmic Ca <sup>2+</sup> levels back to baseline after neuronal activation, and thereby contributes to modulate synaptic plasticity, learning and memory. Plays a role in regulating urinary Ca <sup>2+</sup> and Na <sup>+</sup> excretion.
Synonyms:	KIAA1087; NCX2



[View online »](#)

## Product images:



Western blot analysis of extracts of various cell lines, using SLC8A2 antibody (TA381710) at 1:1000 dilution. | Secondary antibody: HRP Goat Anti-Rabbit IgG (H+L) at 1:10000 dilution. | Lysates/proteins: 25ug per lane. | Blocking buffer: 3% nonfat dry milk in TBST. | Detection: ECL Basic Kit . | Exposure time: 10s.