

Product datasheet for **TA381707**

SLC7A9 Rabbit Polyclonal Antibody

Product data:

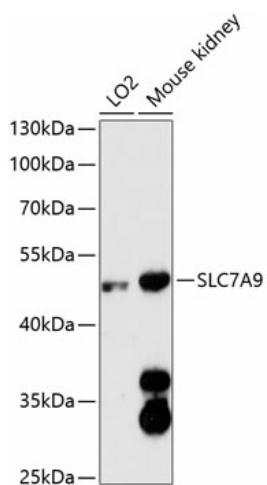
Product Type:	Primary Antibodies
Applications:	ICC/IF, WB
Recommended Dilution:	WB,1:500 - 1:1000 IF,1:50 - 1:200
Reactivity:	Human, Mouse, Rat
Modifications:	Unmodified
Host:	Rabbit
Isotype:	IgG
Clonality:	Polyclonal
Immunogen:	Recombinant fusion protein containing a sequence corresponding to amino acids 1-100 of human SLC7A9 (NP_055085.1).
Formulation:	Buffer: PBS with 0.02% sodium azide,50% glycerol,pH7.3.
Concentration:	lot specific
Purification:	Affinity purification
Conjugation:	Unconjugated
Storage:	Store at -20°C. Avoid freeze / thaw cycles.
Stability:	Shelf life: one year from despatch.
Predicted Protein Size:	53kDa
Gene Name:	solute carrier family 7 member 9
Database Link:	Entrez Gene 11136 Human P82251
Background:	This gene encodes a protein that belongs to a family of light subunits of amino acid transporters. This protein plays a role in the high-affinity and sodium-independent transport of cystine and neutral and dibasic amino acids, and appears to function in the reabsorption of cystine in the kidney tubule. Mutations in this gene cause non-type I cystinuria, a disease that leads to cystine stones in the urinary system due to impaired transport of cystine and dibasic amino acids. Alternate transcript variants, which encode the same protein, have been found for this gene.



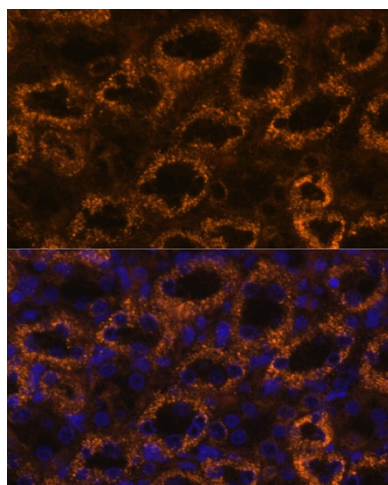
[View online »](#)

Synonyms: B(0,+)AT; BAT1; CSNU3; FLJ94301

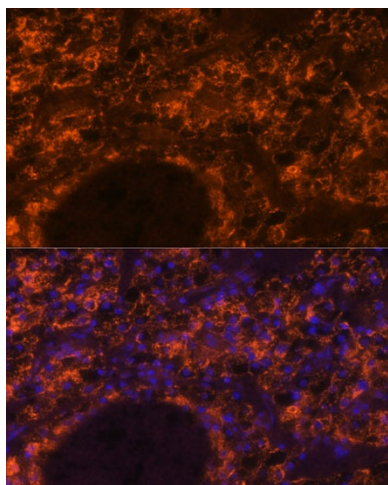
Product images:



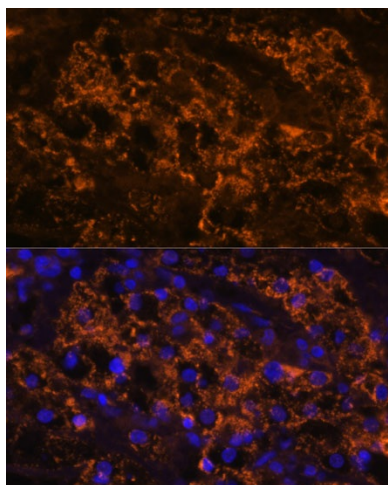
Western blot analysis of extracts of various cell lines, using SLC7A9 antibody (TA381707) at 1:3000 dilution. | Secondary antibody: HRP Goat Anti-Rabbit IgG (H+L) at 1:10000 dilution. | Lysates/proteins: 25ug per lane. | Blocking buffer: 3% nonfat dry milk in TBST. | Detection: ECL Enhanced Kit . | Exposure time: 90s.



Immunofluorescence analysis of rat kidney using SLC7A9 antibody (TA381707) at dilution of 1:100. Blue: DAPI for nuclear staining.



Immunofluorescence analysis of human kidney cancer using SLC7A9 antibody (TA381707) at dilution of 1:100. Blue: DAPI for nuclear staining.



Immunofluorescence analysis of human kidney cancer using SLC7A9 antibody (TA381707) at dilution of 1:100. Blue: DAPI for nuclear staining.