

Product datasheet for **TA381706S**

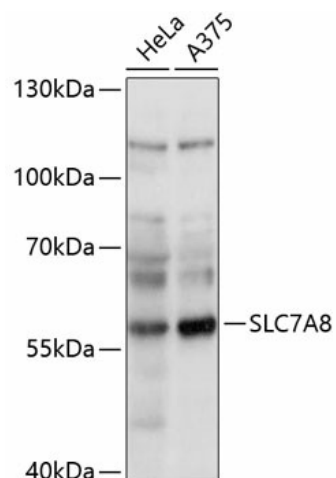
LAT2 (SLC7A8) Rabbit Polyclonal Antibody

Product data:

Product Type:	Primary Antibodies
Applications:	ELISA, WB
Recommended Dilution:	WB, 1:500 - 1:2000 ELISA, Recommended starting concentration is 1 µg/mL. Please optimize the concentration based on your specific assay requirements.
Reactivity:	Human
Modifications:	Unmodified
Host:	Rabbit
Isotype:	IgG
Clonality:	Polyclonal
Formulation:	Buffer: PBS with 0.02% sodium azide, 50% glycerol, pH 7.3.
Concentration:	lot specific
Purification:	Affinity purification
Conjugation:	Unconjugated
Storage:	Store at -20°C. Avoid freeze / thaw cycles.
Stability:	Shelf life: one year from despatch.
Predicted Protein Size:	58kDa
Gene Name:	solute carrier family 7 member 8
Database Link:	Entrez Gene 23428 Human Q9UHI5
Background:	Enables several functions, including neutral amino acid transmembrane transporter activity; thyroid hormone transmembrane transporter activity; and toxin transmembrane transporter activity. Involved in L-alanine import across plasma membrane; L-leucine import across plasma membrane; and thyroid hormone transport. Located in plasma membrane. Part of basolateral plasma membrane and microvillus membrane.
Synonyms:	hLAT2; LAT2; LPI-PC1



[View online »](#)

Product images:


Western blot analysis of various lysates using SLC7A8 Rabbit pAb ([TA381706]) at 1:1000 dilution.

Secondary antibody: HRP-conjugated Goat anti-Rabbit IgG (H+L) (AS014) at 1:10000 dilution.

Lysates/proteins: 25µg per lane.

Blocking buffer: 3% nonfat dry milk in TBST.

Detection: ECL Basic Kit (RM00020).

Exposure time: 10s.