

Product datasheet for TA381705S

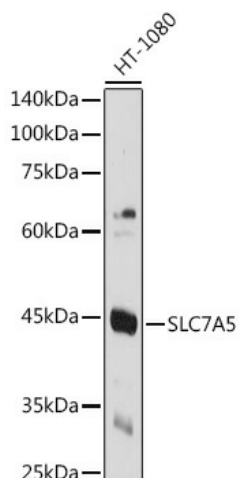
SLC7A5 Rabbit Polyclonal Antibody

Product data:

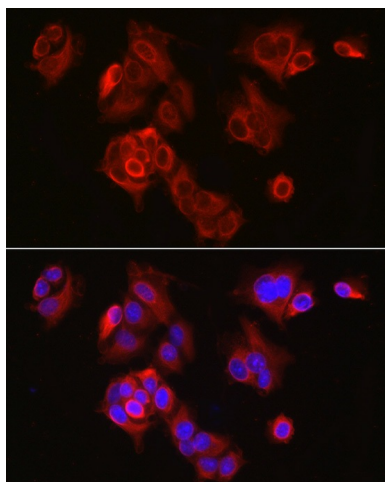
Product Type:	Primary Antibodies
Applications:	ELISA, ICC/IF, WB
Recommended Dilution:	WB, 1:500 - 1:1000 IF/ICC, 1:100 - 1:500 ELISA, Recommended starting concentration is 1 µg/mL. Please optimize the concentration based on your specific assay requirements.
Reactivity:	Human, Mouse, Rat
Modifications:	Unmodified
Host:	Rabbit
Isotype:	IgG
Clonality:	Polyclonal
Formulation:	Buffer: PBS with 0.02% sodium azide, 50% glycerol, pH 7.3.
Concentration:	lot specific
Purification:	Affinity purification
Conjugation:	Unconjugated
Storage:	Store at -20°C. Avoid freeze / thaw cycles.
Stability:	Shelf life: one year from despatch.
Predicted Protein Size:	55kDa
Gene Name:	solute carrier family 7 member 5
Database Link:	Entrez Gene 8140 Human Q01650
Background:	Enables L-leucine transmembrane transporter activity; L-tryptophan transmembrane transporter activity; and thyroid hormone transmembrane transporter activity. Involved in carboxylic acid transport; thyroid hormone transport; and xenobiotic transport. Located in cytosol; intracellular membrane-bounded organelle; and plasma membrane. Is integral component of membrane. Part of amino acid transport complex; apical plasma membrane; and microvillus membrane.
Synonyms:	4F2LC; CD98; CD98LC; D16S469E; E16; hLAT1; LAT1; MPE16


[View online »](#)

Product images:



Western blot analysis of lysates from Mouse testis



Immunofluorescence analysis of MCF7 cells using LAT1/SLC7A5 Rabbit pAb (TA381705S) at dilution of 1:300 (40x lens). Secondary antibody: Cy3-conjugated Goat anti-Rabbit IgG (H+L) (AS007) at 1:500 dilution. Blue: DAPI for nuclear staining.