

## Product datasheet for **TA381701**

### **CAT1 (SLC7A1) Rabbit Polyclonal Antibody**

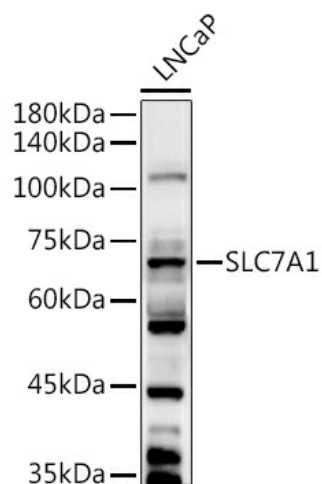
#### **Product data:**

Product Type:	Primary Antibodies
Applications:	IHC, WB
Recommended Dilution:	WB,1:500 - 1:2000 IHC,1:50 - 1:200
Reactivity:	Human, Mouse, Rat
Modifications:	Unmodified
Host:	Rabbit
Isotype:	IgG
Clonality:	Polyclonal
Immunogen:	A synthetic peptide of human SLC7A1
Formulation:	Buffer: PBS with 0.02% sodium azide,50% glycerol,pH7.3.
Concentration:	lot specific
Purification:	Affinity purification
Conjugation:	Unconjugated
Storage:	Store at -20°C. Avoid freeze / thaw cycles.
Stability:	Shelf life: one year from despatch.
Predicted Protein Size:	67kDa
Gene Name:	solute carrier family 7 member 1
Database Link:	<a href="#">Entrez Gene 6541 Human P30825</a>
Background:	High-affinity, low capacity permease involved in the transport of the cationic amino acids (arginine, lysine and ornithine in non-hepatic tissues.
Synonyms:	ATRC1; CAT-1; CAT1; ERR; HCAT1; REC1L



[View online »](#)

## Product images:



Western blot analysis of extracts of LNCaP cells, using SLC7A1 antibody (TA381701) at 1:1000 dilution. | Secondary antibody: HRP Goat Anti-Rabbit IgG (H+L) at 1:10000 dilution. | Lysates/proteins: 25ug per lane. | Blocking buffer: 3% nonfat dry milk in TBST. | Detection: ECL Basic Kit . | Exposure time: 90s.