

Product datasheet for **TA381684**

SLC5A6 Rabbit Polyclonal Antibody

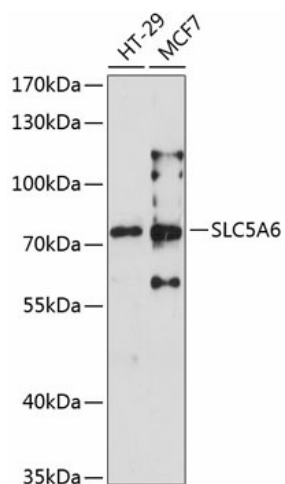
Product data:

Product Type:	Primary Antibodies
Applications:	WB
Recommended Dilution:	WB,1:500 - 1:2000
Reactivity:	Human
Modifications:	Unmodified
Host:	Rabbit
Isotype:	IgG
Clonality:	Polyclonal
Immunogen:	A synthetic peptide corresponding to a sequence within amino acids 500 to the C-terminus of human SLC5A6 (NP_066918.2).
Formulation:	Buffer: PBS with 0.02% sodium azide,50% glycerol,pH7.3.
Concentration:	lot specific
Purification:	Affinity purification
Conjugation:	Unconjugated
Storage:	Store at -20°C. Avoid freeze / thaw cycles.
Stability:	Shelf life: one year from despatch.
Predicted Protein Size:	68kDa
Gene Name:	solute carrier family 5 member 6
Database Link:	Entrez Gene 8884 Human Q9Y289
Background:	Sodium-dependent multivitamin transporter that transports pantothenate, biotin and lipoate. Required for biotin and pantothenate uptake in the intestine (By similarity). Plays a role in the maintenance of intestinal mucosa integrity, by providing the gut mucosa with biotin (By similarity). May play a role in the transport of biotin and pantothenate into the brain across the blood-brain barrier. May also be involved in the sodium-dependent transport of iodide ions.
Synonyms:	OTTHUMP00000201025; SMVT



[View online »](#)

Product images:



Western blot analysis of extracts of various cell lines, using SLC5A6 antibody (TA381684) at 1:3000 dilution. Secondary antibody: HRP Goat Anti-Rabbit IgG (H+L) at 1:10000 dilution. Lysates/proteins: 25ug per lane. Blocking buffer: 3% nonfat dry milk in TBST. Detection: ECL Enhanced Kit. Exposure time: 90s.