

Product datasheet for **TA381681S**

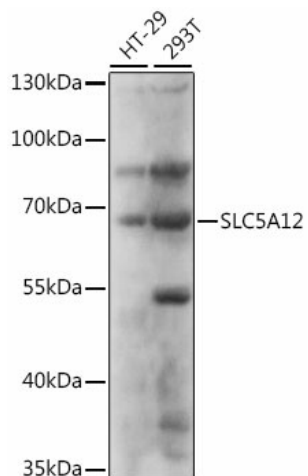
SLC5A12 Rabbit Polyclonal Antibody

Product data:

Product Type:	Primary Antibodies
Applications:	ELISA, WB
Recommended Dilution:	WB, 1:500 - 1:2000 ELISA, Recommended starting concentration is 1 µg/mL. Please optimize the concentration based on your specific assay requirements.
Reactivity:	Human
Modifications:	Unmodified
Host:	Rabbit
Isotype:	IgG
Clonality:	Polyclonal
Formulation:	Buffer: PBS with 0.02% sodium azide, 50% glycerol, pH 7.3.
Concentration:	lot specific
Purification:	Affinity purification
Conjugation:	Unconjugated
Storage:	Store at -20°C. Avoid freeze / thaw cycles.
Stability:	Shelf life: one year from despatch.
Predicted Protein Size:	68kDa
Gene Name:	solute carrier family 5 member 12
Database Link:	Entrez Gene 159963 Human Q1EHB4
Background:	Normal blood lactate is maintained at about 1.5 mM, and little filtered lactate is excreted in urine. Reabsorption of lactate is mediated by the low-affinity Na(+)-coupled lactate transporter SLC5A12 in the initial part of the proximal tubule and by the high-affinity Na(+)-coupled lactate transporter SLC5A8 (MIM 608044) in the distal proximal tubule (Gopal et al., 2007 [PubMed 17692818]).
Synonyms:	DKFZp564G223; MGC52019; SMCT2



[View online »](#)

Product images:

Western blot analysis of various lysates using SLC5A12 Rabbit pAb ([TA381681]) at 1:1000 dilution.

Secondary antibody: HRP-conjugated Goat anti-Rabbit IgG (H+L) (AS014) at 1:10000 dilution.

Lysates/proteins: 25µg per lane.

Blocking buffer: 3% nonfat dry milk in TBST.

Detection: ECL Basic Kit (RM00020).

Exposure time: 5s.