

Product datasheet for **TA381676**

SLC4A8 Rabbit Polyclonal Antibody

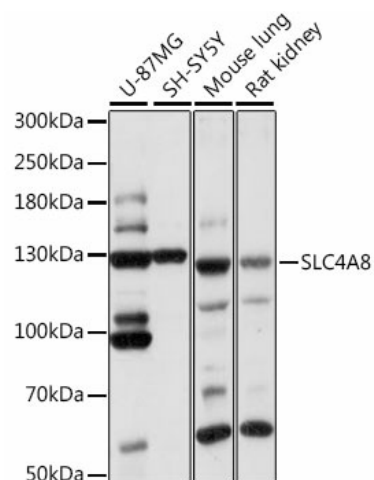
Product data:

Product Type:	Primary Antibodies
Applications:	WB
Recommended Dilution:	WB, 1:500 - 1:2000
Reactivity:	Human, Mouse, Rat
Modifications:	Unmodified
Host:	Rabbit
Isotype:	IgG
Clonality:	Polyclonal
Immunogen:	Recombinant fusion protein containing a sequence corresponding to amino acids 1-90 of human SLC4A8 (NP_001035049.1).
Formulation:	Buffer: PBS with 0.02% sodium azide, 50% glycerol, pH 7.3.
Concentration:	lot specific
Purification:	Affinity purification
Conjugation:	Unconjugated
Storage:	Store at -20°C. Avoid freeze / thaw cycles.
Stability:	Shelf life: one year from despatch.
Predicted Protein Size:	71kDa/77kDa/83kDa/111kDa/117kDa/120kDa/122kDa
Gene Name:	solute carrier family 4 member 8
Database Link:	Entrez Gene 9498 Human Q2Y0W8
Background:	The protein encoded by this gene is a membrane protein that functions to transport sodium and bicarbonate ions across the cell membrane. The encoded protein is important for pH regulation in neurons. The activity of this protein can be inhibited by 4,4'-Di-isothiocyanatostilbene-2,2'-disulfonic acid (DIDS). Several transcript variants encoding different isoforms have been found for this gene.
Synonyms:	DKFZp761B2318; FLJ46462; k-NBC3; KIAA0739; NBC; NBC3; NDCBE; NDCBE1



[View online »](#)

Product images:



Western blot analysis of extracts of various cell lines, using SLC4A8 antibody (TA381676) at 1:1000 dilution. | Secondary antibody: HRP Goat Anti-Rabbit IgG (H+L) at 1:10000 dilution. | Lysates/proteins: 25ug per lane. | Blocking buffer: 3% nonfat dry milk in TBST. | Detection: ECL Basic Kit . | Exposure time: 1s.