

Product datasheet for **TA381671**

SLC4A10 Rabbit Polyclonal Antibody

Product data:

Product Type:	Primary Antibodies
Applications:	WB
Recommended Dilution:	WB,1:500 - 1:2000
Reactivity:	Human, Mouse
Modifications:	Unmodified
Host:	Rabbit
Isotype:	IgG
Clonality:	Polyclonal
Immunogen:	Recombinant fusion protein containing a sequence corresponding to amino acids 640-725 of human SLC4A10 (NP_001171486.1).
Formulation:	Buffer: PBS with 0.02% sodium azide,50% glycerol,pH7.3.
Concentration:	lot specific
Purification:	Affinity purification
Conjugation:	Unconjugated
Storage:	Store at -20°C. Avoid freeze / thaw cycles.
Stability:	Shelf life: one year from despatch.
Predicted Protein Size:	46kDa/122kDa/123kDa/125kDa
Gene Name:	solute carrier family 4 member 10
Database Link:	Entrez Gene 57282 Human Q6U841

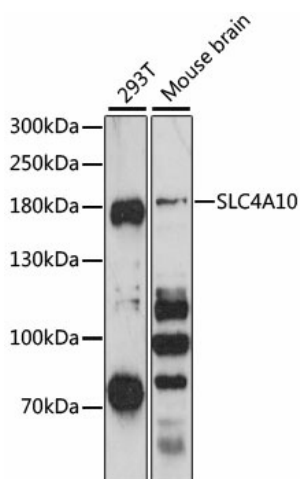
Background: This gene belongs to a small family of sodium-coupled bicarbonate transporters (NCBTs) that regulate the intracellular pH of neurons, the secretion of bicarbonate ions across the choroid plexus, and the pH of the brain extracellular fluid. The protein encoded by this gene was initially identified as a sodium-driven chloride bicarbonate exchanger (NCBE) though there is now evidence that its sodium/bicarbonate cotransport activity is independent of any chloride ion countertransport under physiological conditions. This gene is now classified as a member A10 of the SLC4 family of transmembrane solute carriers. Alternative splicing results in multiple transcript variants encoding distinct isoforms.



[View online »](#)

Synonyms: NBCn2; NCBE

Product images:



Western blot analysis of extracts of various cell lines, using SLC4A10 antibody (TA381671) at 1:3000 dilution. | Secondary antibody: HRP Goat Anti-Rabbit IgG (H+L) at 1:10000 dilution. | Lysates/proteins: 25ug per lane. | Blocking buffer: 3% nonfat dry milk in TBST. | Detection: ECL Basic Kit . | Exposure time: 90s.