

## Product datasheet for **TA381669S**

### SLC47A1 Rabbit Polyclonal Antibody

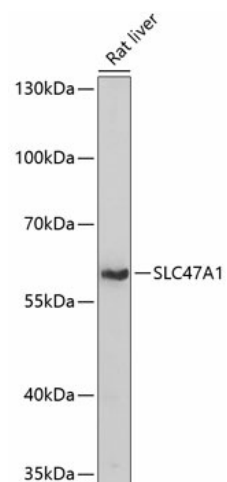
#### Product data:

Product Type:	Primary Antibodies
Applications:	ELISA, WB
Recommended Dilution:	WB, 1:500 - 1:1000 ELISA, Recommended starting concentration is 1 µg/mL. Please optimize the concentration based on your specific assay requirements.
Reactivity:	Human, Rat
Modifications:	Unmodified
Host:	Rabbit
Isotype:	IgG
Clonality:	Polyclonal
Formulation:	Buffer: PBS with 0.02% sodium azide, 50% glycerol, pH 7.3.
Concentration:	lot specific
Purification:	Affinity purification
Conjugation:	Unconjugated
Storage:	Store at -20°C. Avoid freeze / thaw cycles.
Stability:	Shelf life: one year from despatch.
Predicted Protein Size:	62kDa
Gene Name:	solute carrier family 47 member 1
Database Link:	<a href="#">Entrez Gene 55244 Human</a> <a href="#">Q96FL8</a>
Background:	This gene is located within the Smith-Magenis syndrome region on chromosome 17. It encodes a protein of unknown function.
Synonyms:	FLJ10847; hMATE-1; MATE-1; MATE1; MGC64822



[View online »](#)

## Product images:



Western blot analysis of lysates from rat liver