

Product datasheet for **TA381665**

SLC44A2 Rabbit Polyclonal Antibody

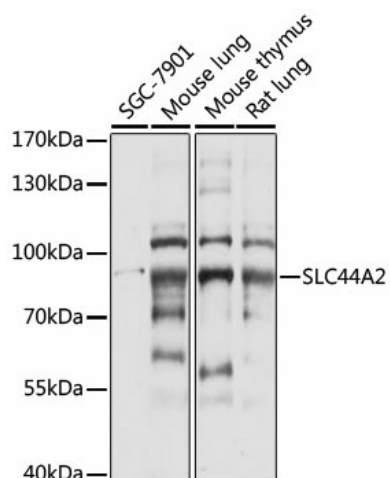
Product data:

Product Type:	Primary Antibodies
Applications:	WB
Recommended Dilution:	WB,1:500 - 1:2000
Reactivity:	Human, Mouse, Rat
Modifications:	Unmodified
Host:	Rabbit
Isotype:	IgG
Clonality:	Polyclonal
Immunogen:	A synthetic peptide corresponding to a sequence within amino acids 150-250 of human SLC44A2 (NP_065161.3).
Formulation:	Buffer: PBS with 0.02% sodium azide,50% glycerol,pH7.3.
Concentration:	lot specific
Purification:	Affinity purification
Conjugation:	Unconjugated
Storage:	Store at -20°C. Avoid freeze / thaw cycles.
Stability:	Shelf life: one year from despatch.
Predicted Protein Size:	79kDa/80kDa
Gene Name:	solute carrier family 44 member 2
Database Link:	Entrez Gene 57153 Human Q8IWA5
Background:	Isoform 1, but not isoform 3, exhibits some choline transporter activity.
Synonyms:	CTL2; DKFZp666A071; FLJ44586; PP1292



[View online »](#)

Product images:



Western blot analysis of extracts of various cell lines, using SLC44A2 antibody (TA381665) at 1:1000 dilution. | Secondary antibody: HRP Goat Anti-Rabbit IgG (H+L) at 1:10000 dilution. | Lysates/proteins: 25ug per lane. | Blocking buffer: 3% nonfat dry milk in TBST. | Detection: ECL Basic Kit . | Exposure time: 5s.