

Product datasheet for **TA381664S**

SLC44A1 Rabbit Polyclonal Antibody

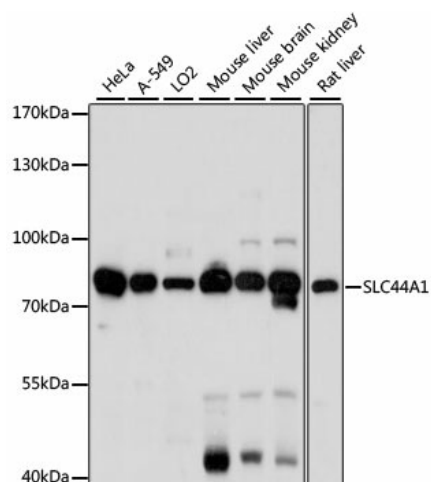
Product data:

Product Type:	Primary Antibodies
Applications:	ELISA, WB
Recommended Dilution:	WB, 1:200 - 1:2000 ELISA, Recommended starting concentration is 1 µg/mL. Please optimize the concentration based on your specific assay requirements.
Reactivity:	Human, Mouse, Rat
Modifications:	Unmodified
Host:	Rabbit
Isotype:	IgG
Clonality:	Polyclonal
Formulation:	Buffer: PBS with 0.02% sodium azide, 50% glycerol, pH 7.3.
Concentration:	lot specific
Purification:	Affinity purification
Conjugation:	Unconjugated
Storage:	Store at -20°C. Avoid freeze / thaw cycles.
Stability:	Shelf life: one year from despatch.
Predicted Protein Size:	73kDa
Gene Name:	solute carrier family 44 member 1
Database Link:	Entrez Gene 23446 Human Q8WWI5
Background:	Enables choline transmembrane transporter activity. Involved in choline transport and transmembrane transport. Located in several cellular components, including cytosol; mitochondrion; and nucleoplasm. Implicated in high grade glioma.
Synonyms:	CD92; CDw92; CHTL1; CTL1; RP11-287A8.1



[View online »](#)

Product images:



Western blot analysis of various lysates using SLC44A1 Rabbit pAb (TA381664S) at 1:1000 dilution.

Secondary antibody: HRP-conjugated Goat anti-Rabbit IgG (H+L) (AS014) at 1:10000 dilution.

Lysates/proteins: 25µg per lane.

Blocking buffer: 3% nonfat dry milk in TBST.

Detection: ECL Basic Kit (RM00020).

Exposure time: 30s.