

Product datasheet for **TA381664**

SLC44A1 Rabbit Polyclonal Antibody

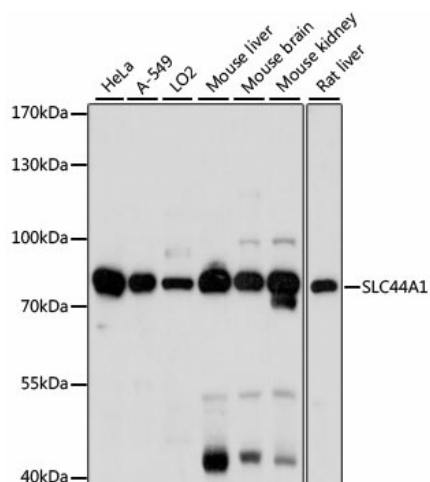
Product data:

Product Type:	Primary Antibodies
Applications:	WB
Recommended Dilution:	WB,1:200 - 1:2000
Reactivity:	Human, Mouse, Rat
Modifications:	Unmodified
Host:	Rabbit
Isotype:	IgG
Clonality:	Polyclonal
Immunogen:	Recombinant fusion protein containing a sequence corresponding to amino acids 55-210 of human SLC44A1 (NP_536856.2).
Formulation:	Buffer: PBS with 0.02% sodium azide,50% glycerol,pH7.3.
Concentration:	lot specific
Purification:	Affinity purification
Conjugation:	Unconjugated
Storage:	Store at -20°C. Avoid freeze / thaw cycles.
Stability:	Shelf life: one year from despatch.
Predicted Protein Size:	73kDa
Gene Name:	solute carrier family 44 member 1
Database Link:	Entrez Gene 23446 Human Q8WWI5
Background:	Choline transporter. Involved in membrane synthesis and myelin production.
Synonyms:	CD92; CDw92; CHTL1; CTL1; RP11-287A8.1



[View online »](#)

Product images:



Western blot analysis of extracts of various cell lines, using SLC44A1 antibody (TA381664) at 1:1000 dilution. | Secondary antibody: HRP Goat Anti-Rabbit IgG (H+L) at 1:10000 dilution. | Lysates/proteins: 25ug per lane. | Blocking buffer: 3% nonfat dry milk in TBST. | Detection: ECL Basic Kit . | Exposure time: 30s.