

Product datasheet for **TA381658**

SLC39A2 Rabbit Polyclonal Antibody

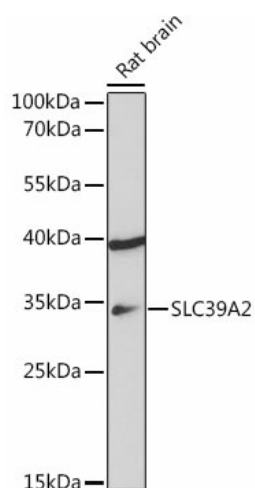
Product data:

Product Type:	Primary Antibodies
Applications:	ELISA, WB
Recommended Dilution:	WB, 1:500 - 1:1000 ELISA, Recommended starting concentration is 1 µg/mL. Please optimize the concentration based on your specific assay requirements.
Reactivity:	Rat
Host:	Rabbit
Isotype:	IgG
Clonality:	Polyclonal
Formulation:	Buffer: PBS with 0.01% thimerosal, 50% glycerol, pH7.3.
Concentration:	lot specific
Purification:	Affinity purification
Conjugation:	Unconjugated
Storage:	Store at -20°C. Avoid freeze / thaw cycles.
Stability:	Shelf life: one year from despatch.
Predicted Protein Size:	33kDa
Gene Name:	solute carrier family 39 member 2
Database Link:	Q9NP94
Background:	This gene encodes a member of the ZIP family of metal ion transporters. The encoded protein functions as a zinc transporter. Mutations in this gene may be associated with susceptibility to carotid artery disease. Multiple transcript variants have been described.
Synonyms:	6A1; Eti-1; hZIP2; MGC119190; ZIP-2; ZIP2



[View online »](#)

Product images:



Western blot analysis of lysates from Rat brain