

## Product datasheet for **TA381657S**

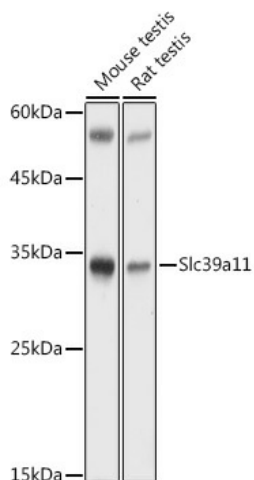
### Slc39a11 Rabbit Polyclonal Antibody

#### Product data:

Product Type:	Primary Antibodies
Applications:	ELISA, IHC, WB
Recommended Dilution:	WB,1:500 - 1:1000 IHC-P,1:50 - 1:200 ELISA,Recommended starting concentration is 1 µg/mL. Please optimize the concentration based on your specific assay requirements.
Reactivity:	Human, Mouse, Rat
Modifications:	Unmodified
Host:	Rabbit
Isotype:	IgG
Clonality:	Polyclonal
Formulation:	Buffer: PBS with 0.02% sodium azide,50% glycerol,pH7.3.
Concentration:	lot specific
Purification:	Affinity purification
Conjugation:	Unconjugated
Storage:	Store at -20°C. Avoid freeze / thaw cycles.
Stability:	Shelf life: one year from despatch.
Predicted Protein Size:	35kDa
Gene Name:	solute carrier family 39 (metal ion transporter), member 11
Database Link:	<a href="#">Entrez Gene 69806 Mouse</a> <a href="#">Q8BWY7</a>
Background:	Enables zinc ion transmembrane transporter activity. Predicted to be involved in zinc ion transmembrane transport. Predicted to act upstream of or within zinc ion transport. Located in Golgi apparatus; nucleus; and plasma membrane. Orthologous to human SLC39A11 (solute carrier family 39 member 11).
Synonyms:	C17orf26; ZIP-11; ZIP11



[View online »](#)

**Product images:**

Western blot analysis of various lysates using Slc39a11 Rabbit pAb ([TA381657]) at 1:1000 dilution.

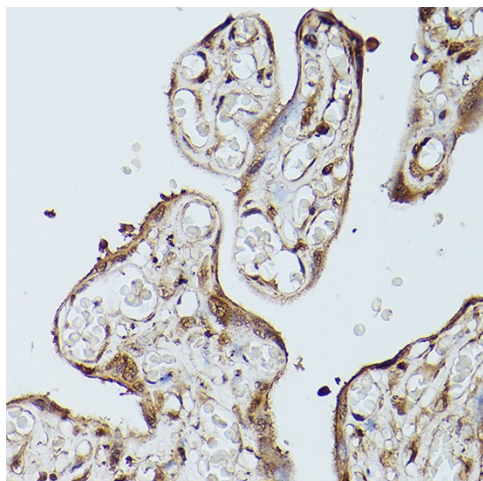
Secondary antibody: HRP-conjugated Goat anti-Rabbit IgG (H+L) (AS014) at 1:10000 dilution.

Lysates/proteins: 25µg per lane.

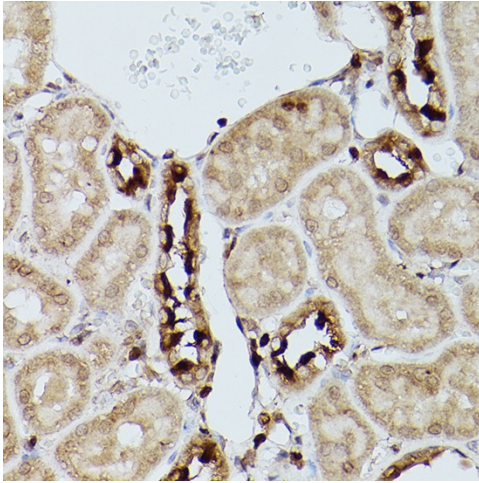
Blocking buffer: 3% nonfat dry milk in TBST.

Detection: ECL Basic Kit (RM00020).

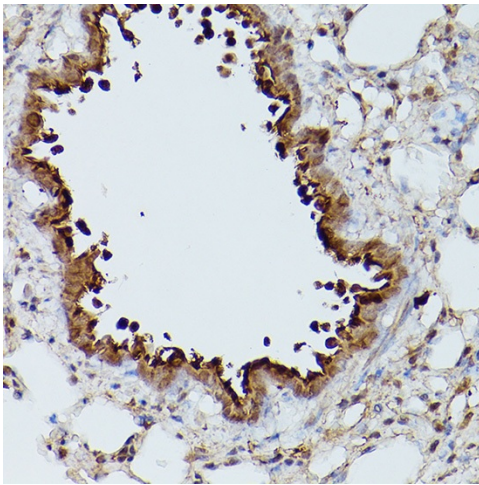
Exposure time: 30s.



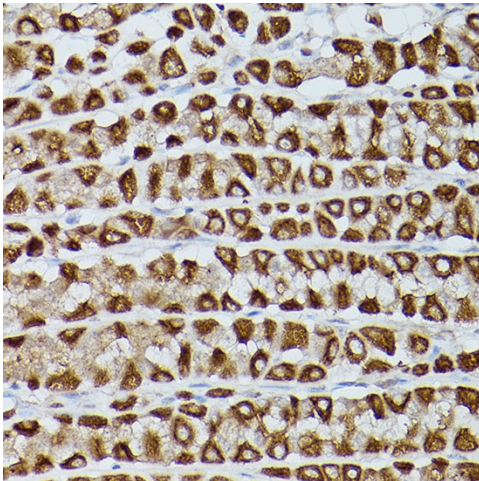
Immunohistochemistry analysis of paraffin-embedded Human breast cancer using Slc39a11 Rabbit pAb ([TA381657]) at dilution of 1:100 (40x lens). High pressure antigen retrieval performed with 0.01M Citrate Bufferr (pH 6.0) prior to IHC staining.



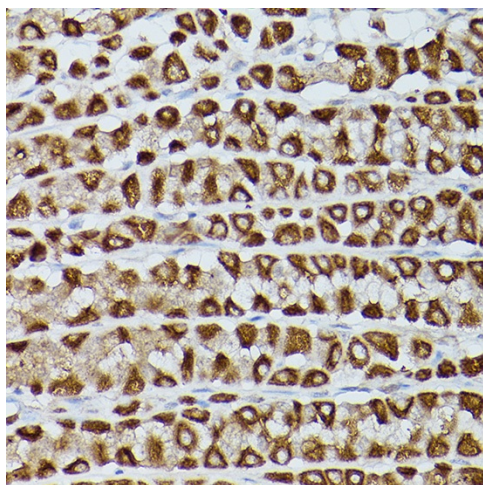
Immunohistochemistry analysis of paraffin-embedded Human placenta using Slc39a11 Rabbit pAb ([TA381657]) at dilution of 1:100 (40x lens). High pressure antigen retrieval performed with 0.01M Citrate Bufferr (pH 6.0) prior to IHC staining.



Immunohistochemistry analysis of paraffin-embedded Mouse kidney using Slc39a11 Rabbit pAb ([TA381657]) at dilution of 1:100 (40x lens). High pressure antigen retrieval performed with 0.01M Citrate Bufferr (pH 6.0) prior to IHC staining.



Immunohistochemistry analysis of paraffin-embedded Mouse lung using Slc39a11 Rabbit pAb ([TA381657]) at dilution of 1:100 (40x lens). High pressure antigen retrieval performed with 0.01M Citrate Bufferr (pH 6.0) prior to IHC staining.



Immunohistochemistry analysis of paraffin-embedded Rat stomach using Slc39a11 Rabbit pAb ([TA381657]) at dilution of 1:100 (40x lens). High pressure antigen retrieval performed with 0.01M Citrate Bufferr (pH 6.0) prior to IHC staining.