

Product datasheet for **TA381653**

SLC37A2 Rabbit Polyclonal Antibody

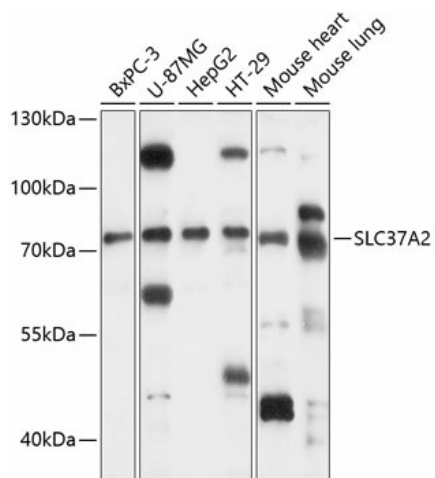
Product data:

Product Type:	Primary Antibodies
Applications:	WB
Recommended Dilution:	WB,1:500 - 1:2000
Reactivity:	Human, Mouse
Modifications:	Unmodified
Host:	Rabbit
Isotype:	IgG
Clonality:	Polyclonal
Immunogen:	Recombinant fusion protein containing a sequence corresponding to amino acids 220-313 of human SLC37A2 (NP_938018.1).
Formulation:	Buffer: PBS with 0.02% sodium azide,50% glycerol,pH7.3.
Concentration:	lot specific
Purification:	Affinity purification
Conjugation:	Unconjugated
Storage:	Store at -20°C. Avoid freeze / thaw cycles.
Stability:	Shelf life: one year from despatch.
Predicted Protein Size:	13kDa/42kDa/54kDa
Gene Name:	solute carrier family 37 member 2
Database Link:	Entrez Gene 219855 Human Q8TED4
Background:	SLC37A2 (solute carrier family 37 (glucose-6-phosphate transporter), member 2) is a protein-coding gene. GO annotations related to this gene include transporter activity. An important paralog of this gene is SLC37A3.
Synonyms:	FLJ00171; MGC71430; pp11662; SPX2



[View online »](#)

Product images:



Western blot analysis of extracts of various cell lines, using SLC37A2 antibody (TA381653) at 1:3000 dilution. | Secondary antibody: HRP Goat Anti-Rabbit IgG (H+L) at 1:10000 dilution. | Lysates/proteins: 25ug per lane. | Blocking buffer: 3% nonfat dry milk in TBST. | Detection: ECL Basic Kit . | Exposure time: 30s.