

Product datasheet for **TA381652S**

SLC35D3 Rabbit Polyclonal Antibody

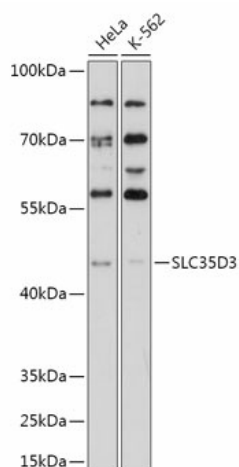
Product data:

Product Type:	Primary Antibodies
Applications:	ELISA, WB
Recommended Dilution:	WB, 1:500 - 1:2000 ELISA, Recommended starting concentration is 1 µg/mL. Please optimize the concentration based on your specific assay requirements.
Reactivity:	Human
Modifications:	Unmodified
Host:	Rabbit
Isotype:	IgG
Clonality:	Polyclonal
Formulation:	Buffer: PBS with 0.02% sodium azide, 50% glycerol, pH 7.3.
Concentration:	lot specific
Purification:	Affinity purification
Conjugation:	Unconjugated
Storage:	Store at -20°C. Avoid freeze / thaw cycles.
Stability:	Shelf life: one year from despatch.
Predicted Protein Size:	44kDa
Gene Name:	solute carrier family 35 member D3
Database Link:	Entrez Gene 340146 Human Q5M8T2
Background:	Predicted to enable antiporter activity and pyrimidine nucleotide-sugar transmembrane transporter activity. Predicted to be involved in carbohydrate transport and pyrimidine nucleotide-sugar transmembrane transport. Predicted to act upstream of or within energy homeostasis and positive regulation of protein exit from endoplasmic reticulum. Predicted to be located in early endosome and endoplasmic reticulum. Predicted to be integral component of membrane. Predicted to be active in Golgi apparatus.
Synonyms:	bA55K22.3; FRCL1; MGC102873



[View online »](#)

Product images:



Western blot analysis of various lysates using SLC35D3 Rabbit pAb ([TA381652]) at 1:1000 dilution.

Secondary antibody: HRP-conjugated Goat anti-Rabbit IgG (H+L) (AS014) at 1:10000 dilution.

Lysates/proteins: 25µg per lane.

Blocking buffer: 3% nonfat dry milk in TBST.

Detection: ECL Enhanced Kit (RM00021).

Exposure time: 90s.