

Product datasheet for **TA381649S**

SLC34A1 Rabbit Polyclonal Antibody

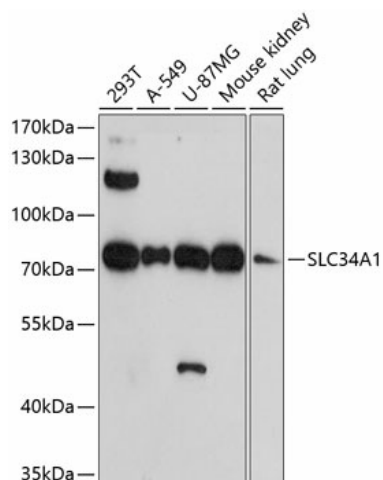
Product data:

Product Type:	Primary Antibodies
Applications:	ELISA, WB
Recommended Dilution:	WB, 1:1000 - 1:5000 ELISA, Recommended starting concentration is 1 µg/mL. Please optimize the concentration based on your specific assay requirements.
Reactivity:	Human, Mouse, Rat
Modifications:	Unmodified
Host:	Rabbit
Isotype:	IgG
Clonality:	Polyclonal
Formulation:	Buffer: PBS with 0.02% sodium azide, 50% glycerol, pH 7.3.
Concentration:	lot specific
Purification:	Affinity purification
Conjugation:	Unconjugated
Storage:	Store at -20°C. Avoid freeze / thaw cycles.
Stability:	Shelf life: one year from despatch.
Predicted Protein Size:	69kDa
Gene Name:	solute carrier family 34 member 1
Database Link:	Entrez Gene 6569 Human Q06495
Background:	Enables sodium:phosphate symporter activity. Involved in several processes, including phosphate ion homeostasis; phosphate ion transport; and response to lead ion. Located in several cellular components, including apical plasma membrane; mitotic spindle; and nuclear speck. Implicated in several diseases, including Fanconi syndrome (multiple); chronic kidney disease; hereditary hypophosphatemic rickets with hypercalciuria; hypophosphatemic nephrolithiasis/osteoporosis 1; and nephrolithiasis.
Synonyms:	NaPi-2a; NAPI-3; NPHLOP1; NPT2; NPTIIa; SLC11; SLC17A2

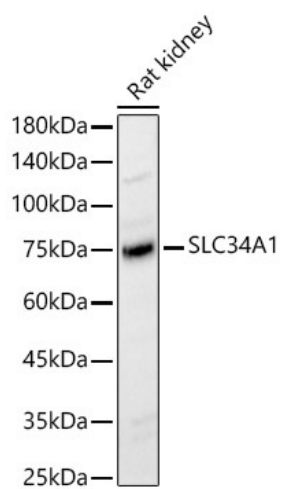


[View online »](#)

Product images:



Western blot analysis of various lysates



Western blot analysis of lysates from Rat kidney