

## Product datasheet for **TA381649**

### SLC34A1 Rabbit Polyclonal Antibody

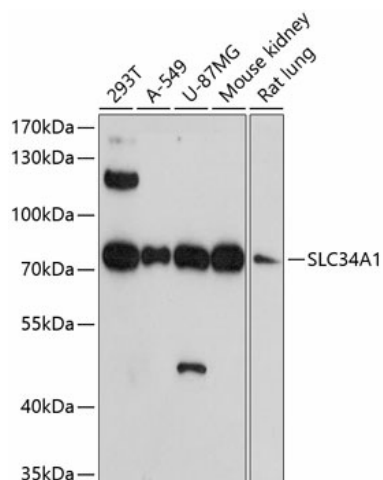
#### Product data:

Product Type:	Primary Antibodies
Applications:	WB
Recommended Dilution:	WB,1:500 - 1:2000
Reactivity:	Human, Mouse, Rat
Modifications:	Unmodified
Host:	Rabbit
Isotype:	IgG
Clonality:	Polyclonal
Immunogen:	Recombinant protein of human SLC34A1
Formulation:	Buffer: PBS with 0.02% sodium azide,50% glycerol,pH7.3.
Concentration:	lot specific
Purification:	Affinity purification
Conjugation:	Unconjugated
Storage:	Store at -20°C. Avoid freeze / thaw cycles.
Stability:	Shelf life: one year from despatch.
Predicted Protein Size:	36kDa/68kDa
Gene Name:	solute carrier family 34 member 1
Database Link:	<a href="#">Entrez Gene 6569 Human Q06495</a>
Background:	This gene encodes a member of the type II sodium-phosphate cotransporter family. Mutations in this gene are associated with hypophosphatemia nephrolithiasis/osteoporosis 1. Alternative splicing results in multiple transcript variants.
Synonyms:	NaPi-2a; NAPI-3; NPHLOP1; NPT2; NPTIIa; SLC11; SLC17A2



[View online »](#)

## Product images:



Western blot analysis of extracts of various cell lines, using SLC34A1 antibody (TA381649) at 1:1000 dilution. | Secondary antibody: HRP Goat Anti-Rabbit IgG (H+L) at 1:10000 dilution. | Lysates/proteins: 25ug per lane. | Blocking buffer: 3% nonfat dry milk in TBST. | Detection: ECL Basic Kit. | Exposure time: 90s.