

Product datasheet for **TA381646S**

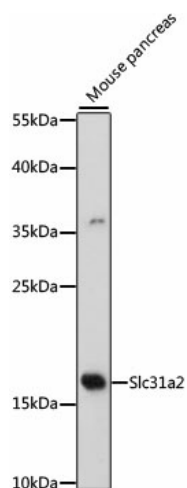
Slc31a2 Rabbit Polyclonal Antibody

Product data:

Product Type:	Primary Antibodies
Applications:	ELISA, WB
Recommended Dilution:	WB, 1:500 - 1:2000 ELISA, Recommended starting concentration is 1 µg/mL. Please optimize the concentration based on your specific assay requirements.
Reactivity:	Mouse
Modifications:	Unmodified
Host:	Rabbit
Isotype:	IgG
Clonality:	Polyclonal
Formulation:	Buffer: PBS with 0.02% sodium azide, 50% glycerol, pH 7.3.
Concentration:	lot specific
Purification:	Affinity purification
Conjugation:	Unconjugated
Storage:	Store at -20°C. Avoid freeze / thaw cycles.
Stability:	Shelf life: one year from despatch.
Predicted Protein Size:	16kDa
Gene Name:	solute carrier family 31, member 2
Database Link:	Entrez Gene 20530 Mouse O15432
Background:	Acts upstream of or within cellular copper ion homeostasis and regulation of copper ion transmembrane transport. Located in late endosome; membrane; and recycling endosome. Is expressed in brain; retina nuclear layer; and urinary system. Orthologous to human SLC31A2 (solute carrier family 31 member 2).
Synonyms:	COPT2; CTR2; hCTR2

[View online »](#)

Product images:



Western blot analysis of lysates from mouse pancreas