

## Product datasheet for **TA381636**

### Glucose Transporter 5 GLUT5 (SLC2A5) Rabbit Polyclonal Antibody

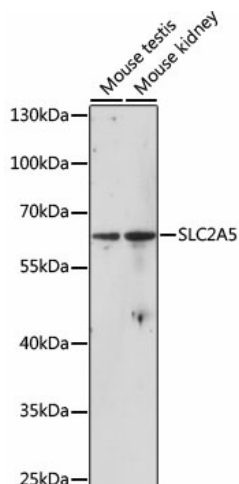
#### Product data:

Product Type:	Primary Antibodies
Applications:	WB
Recommended Dilution:	WB,1:200 - 1:2000
Reactivity:	Human, Mouse
Modifications:	Unmodified
Host:	Rabbit
Isotype:	IgG
Clonality:	Polyclonal
Immunogen:	A synthetic peptide corresponding to a sequence within amino acids 1-100 of human SLC2A5 (NP_003030.1).
Formulation:	Buffer: PBS with 0.02% sodium azide,50% glycerol,pH7.3.
Concentration:	lot specific
Purification:	Affinity purification
Conjugation:	Unconjugated
Storage:	Store at -20°C. Avoid freeze / thaw cycles.
Stability:	Shelf life: one year from despatch.
Predicted Protein Size:	26kDa/54kDa
Gene Name:	solute carrier family 2 member 5
Database Link:	<a href="#">Entrez Gene 6518 Human P22732</a>
Background:	The protein encoded by this gene is a fructose transporter responsible for fructose uptake by the small intestine. The encoded protein also is necessary for the increase in blood pressure due to high dietary fructose consumption.
Synonyms:	GLUT-5; GLUT5



[View online »](#)

## Product images:



Western blot analysis of extracts of various cell lines, using SLC2A5 antibody (TA381636) at 1:1000 dilution. | Secondary antibody: HRP Goat Anti-Rabbit IgG (H+L) at 1:10000 dilution. | Lysates/proteins: 25ug per lane. | Blocking buffer: 3% nonfat dry milk in TBST. | Detection: ECL Enhanced Kit. | Exposure time: 20s.