

Product datasheet for **TA381630**

Glucose Transporter GLUT1 (SLC2A1) Rabbit Polyclonal Antibody

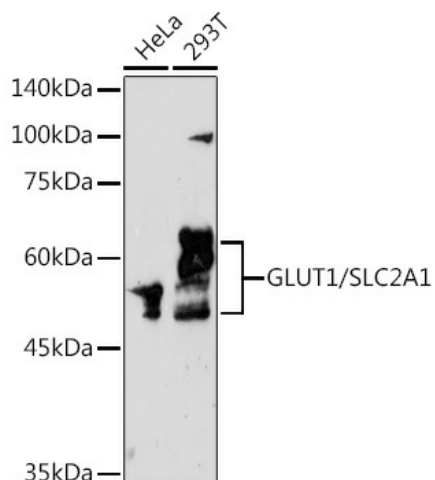
Product data:

Product Type:	Primary Antibodies
Applications:	IHC, WB
Recommended Dilution:	WB, 1:500 - 1:2000 IHC, 1:50 - 1:200
Reactivity:	Human, Mouse, Rat
Modifications:	Unmodified
Host:	Rabbit
Isotype:	IgG
Clonality:	Polyclonal
Immunogen:	Recombinant fusion protein containing a sequence corresponding to amino acids 210-310 of human GLUT1/SLC2A1 (NP_006507.2).
Formulation:	Buffer: PBS with 0.02% sodium azide, 50% glycerol, pH 7.3.
Concentration:	lot specific
Purification:	Affinity purification
Conjugation:	Unconjugated
Storage:	Store at -20°C. Avoid freeze / thaw cycles.
Stability:	Shelf life: one year from despatch.
Predicted Protein Size:	54kDa
Gene Name:	solute carrier family 2 member 1
Database Link:	Entrez Gene 6513 Human P11166
Background:	This gene encodes a major glucose transporter in the mammalian blood-brain barrier. The encoded protein is found primarily in the cell membrane and on the cell surface, where it can also function as a receptor for human T-cell leukemia virus (HTLV) I and II. Mutations in this gene have been found in a family with paroxysmal exertion-induced dyskinesia.
Synonyms:	DYT17; DYT18; GLUT; GLUT-1; GLUT1; MGC141895; MGC141896; PED



[View online »](#)

Product images:



Western blot analysis of extracts of various cell lines, using GLUT1/SLC2A1 Rabbit pAb (TA381630) at 1:1000 dilution. | Secondary antibody: HRP Goat Anti-Rabbit IgG (H+L) at 1:10000 dilution. | Lysates/proteins: 25ug per lane. | Blocking buffer: 3% nonfat dry milk in TBST. | Detection: ECL Enhanced Kit. | Exposure time: 180s.