

## Product datasheet for **TA381624S**

### SLC28A2 Rabbit Polyclonal Antibody

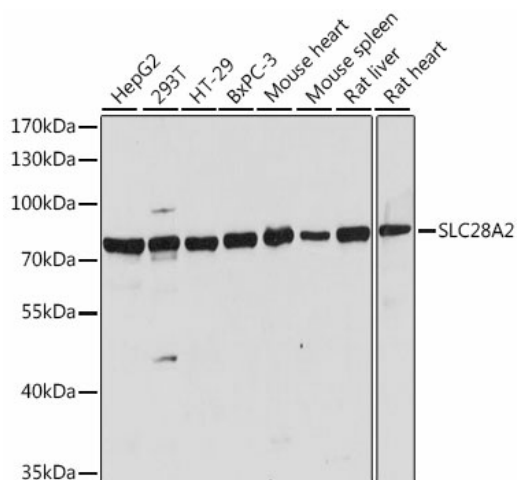
#### Product data:

Product Type:	Primary Antibodies
Applications:	WB
Recommended Dilution:	WB,1:500 - 1:2000
Reactivity:	Human, Mouse, Rat
Modifications:	Unmodified
Host:	Rabbit
Isotype:	IgG
Clonality:	Polyclonal
Immunogen:	A synthetic peptide corresponding to a sequence within amino acids 350-450 of human SLC28A2 (NP_004203.2).
Formulation:	Buffer: PBS with 0.02% sodium azide,50% glycerol,pH7.3.
Concentration:	lot specific
Purification:	Affinity purification
Conjugation:	Unconjugated
Storage:	Store at -20°C. Avoid freeze / thaw cycles.
Stability:	Shelf life: one year from despatch.
Predicted Protein Size:	71kDa
Gene Name:	solute carrier family 28 member 2
Database Link:	<a href="#">Entrez Gene 9153 Human O43868</a>
Background:	Sodium-dependent and purine-selective transporter. Exhibits the transport characteristics of the nucleoside transport system cif or N1 subtype (N1/cif (selective for purine nucleosides and uridine. Plays a critical role in specific uptake and salvage of purine nucleosides in kidney and other tissues.
Synonyms:	CNT2; FLJ21468; HCNT2; HsT17153; MGC138252; SPNT; SPNT1



[View online »](#)

## Product images:



Western blot analysis of extracts of various cell lines, using SLC28A2 antibody ([TA381624]) at 1:1000 dilution. | Secondary antibody: HRP Goat Anti-Rabbit IgG (H+L) at 1:10000 dilution. | Lysates/proteins: 25ug per lane. | Blocking buffer: 3% nonfat dry milk in TBST. | Detection: ECL Basic Kit . | Exposure time: 5s.