

Product datasheet for **TA381622S**

FATP1 (SLC27A1) Rabbit Polyclonal Antibody

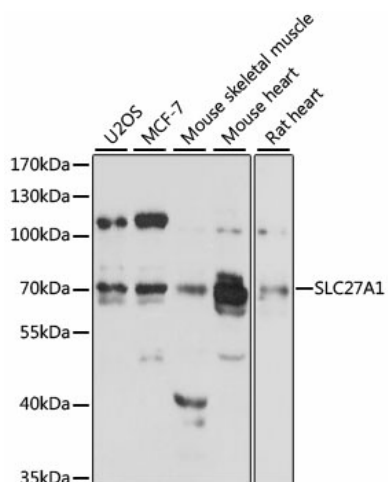
Product data:

Product Type:	Primary Antibodies
Applications:	ELISA, ICC/IF, WB
Recommended Dilution:	WB, 1:1000 - 1:2000 IF/ICC, 1:50 - 1:200 ELISA, Recommended starting concentration is 1 µg/mL. Please optimize the concentration based on your specific assay requirements.
Reactivity:	Human, Mouse, Rat
Modifications:	Unmodified
Host:	Rabbit
Isotype:	IgG
Clonality:	Polyclonal
Formulation:	PBS with 0.05% proclin300, 50% glycerol, pH7.3.
Concentration:	lot specific
Purification:	Affinity purification
Conjugation:	Unconjugated
Storage:	Store at -20°C. Avoid freeze / thaw cycles.
Stability:	Shelf life: one year from despatch.
Predicted Protein Size:	71kDa
Gene Name:	solute carrier family 27 member 1
Database Link:	Entrez Gene 376497 Human Q6PCB7
Background:	Enables biotin transmembrane transporter activity; efflux transmembrane transporter activity; and long-chain fatty acid transporter activity. Involved in several processes, including carboxylic acid transmembrane transport; glycerophospholipid biosynthetic process; and lipid transport across blood-brain barrier. Located in membrane. Part of plasma membrane.
Synonyms:	ACSVL5; FATP; FATP-1; FATP1; FLJ00336; MGC71751

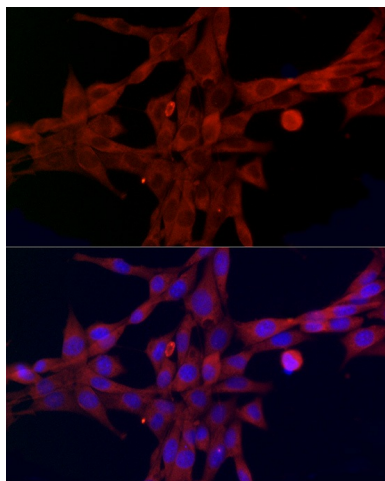


[View online »](#)

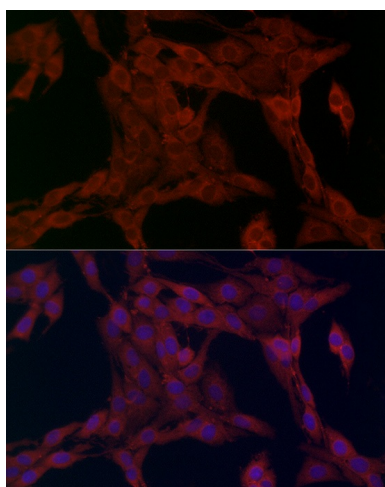
Product images:



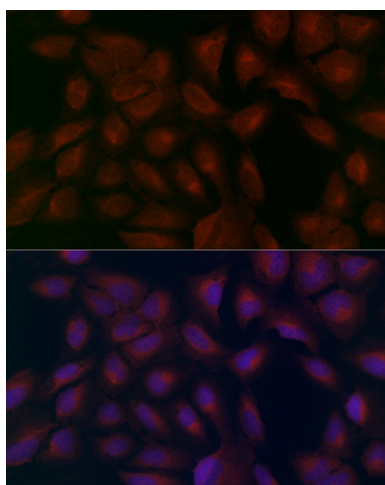
Western blot analysis of lysates from Mouse heart



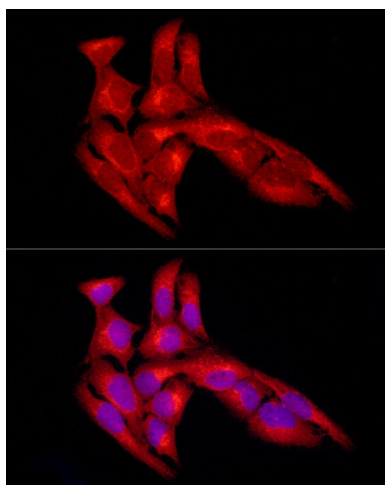
Immunofluorescence analysis of HeLa cells using SLC27A1 Rabbit pAb ([TA381622]) at dilution of 1:100 (40x lens). Secondary antibody: Cy3-conjugated Goat anti-Rabbit IgG (H+L) (AS007) at 1:500 dilution. Blue: DAPI for nuclear staining.



Immunofluorescence analysis of NIH/3T3 cells using SLC27A1 Rabbit pAb ([TA381622]) at dilution of 1:100 (40x lens). Secondary antibody: Cy3-conjugated Goat anti-Rabbit IgG (H+L) (AS007) at 1:500 dilution. Blue: DAPI for nuclear staining.



Immunofluorescence analysis of PC-12 cells using SLC27A1 Rabbit pAb ([TA381622]) at dilution of 1:100 (40x lens). Secondary antibody: Cy3-conjugated Goat anti-Rabbit IgG (H+L) (AS007) at 1:500 dilution. Blue: DAPI for nuclear staining.



Immunofluorescence analysis of U2OS cells using SLC27A1 Rabbit pAb ([TA381622]) at dilution of 1:100 (40x lens). Secondary antibody: Cy3-conjugated Goat anti-Rabbit IgG (H+L) (AS007) at 1:500 dilution. Blue: DAPI for nuclear staining.