

Product datasheet for **TA381622**

FATP1 (SLC27A1) Rabbit Polyclonal Antibody

Product data:

Product Type:	Primary Antibodies
Applications:	ICC/IF, WB
Recommended Dilution:	WB,1:1000 - 1:2000 IF,1:50 - 1:200
Reactivity:	Human, Mouse, Rat
Modifications:	Unmodified
Host:	Rabbit
Isotype:	IgG
Clonality:	Polyclonal
Immunogen:	Recombinant fusion protein containing a sequence corresponding to amino acids 347-646 of human SLC27A1 (NP_940982.1).
Formulation:	Buffer: PBS with 0.02% sodium azide,50% glycerol,pH7.3.
Concentration:	lot specific
Purification:	Affinity purification
Conjugation:	Unconjugated
Storage:	Store at -20°C. Avoid freeze / thaw cycles.
Stability:	Shelf life: one year from despatch.
Predicted Protein Size:	51kDa/71kDa
Gene Name:	solute carrier family 27 member 1
Database Link:	Entrez Gene 376497 Human Q6PCB7



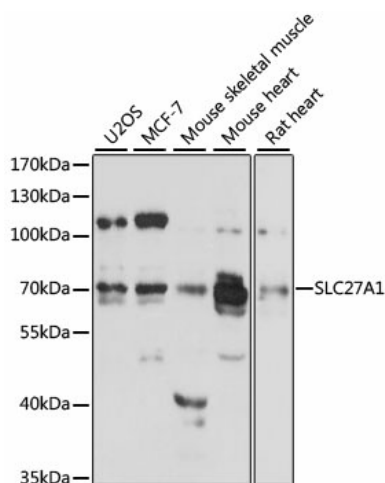
[View online »](#)

Background:

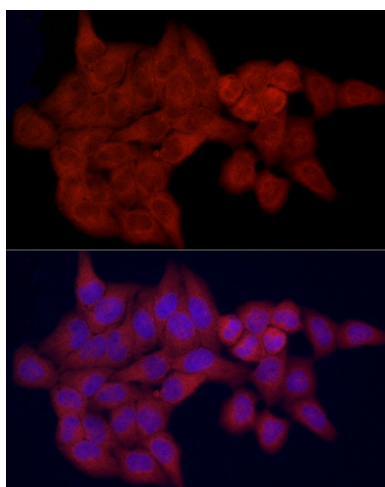
Mediates the ATP-dependent import of long-chain fatty acids (LCFA) into the cell by mediating their translocation at the plasma membrane. Has also an acyl-CoA ligase activity for long-chain and very-long-chain fatty acids. May act directly as a bona fide transporter, or alternatively, in a cytoplasmic or membrane-associated multimeric protein complex to trap and draw fatty acids towards accumulation. Plays a pivotal role in regulating available LCFA substrates from exogenous sources in tissues undergoing high levels of beta-oxidation or triglyceride synthesis. May be involved in regulation of cholesterol metabolism (By similarity). Probably involved in fatty acid transport across the blood barrier.

Synonyms:

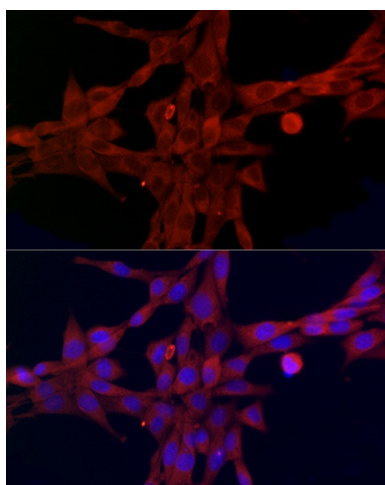
ACSVL5; FATP; FATP-1; FATP1; FLJ00336; MGC71751

Product images:


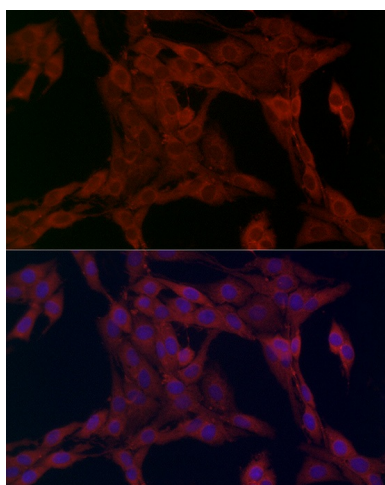
Western blot analysis of extracts of various cell lines, using SLC27A1 antibody (TA381622) at 1:3000 dilution. |Secondary antibody: HRP Goat Anti-Rabbit IgG (H+L) at 1:10000 dilution. |Lysates/proteins: 25ug per lane. |Blocking buffer: 3% nonfat dry milk in TBST. |Detection: ECL Enhanced Kit. |Exposure time: 30s.



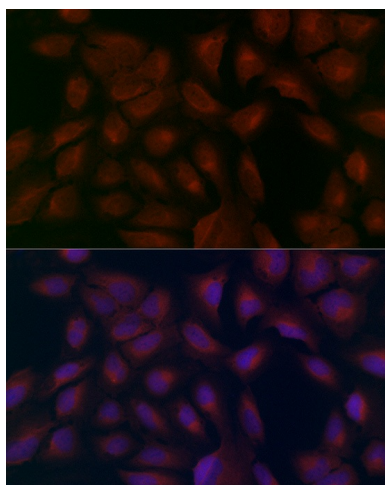
Immunofluorescence analysis of HeLa cells using SLC27A1 Rabbit pAb (TA381622) at dilution of 1:100 (40x lens). Blue: DAPI for nuclear staining.



Immunofluorescence analysis of NIH/3T3 cells using SLC27A1 Rabbit pAb (TA381622) at dilution of 1:100 (40x lens). Blue: DAPI for nuclear staining.



Immunofluorescence analysis of PC-12 cells using SLC27A1 Rabbit pAb (TA381622) at dilution of 1:100 (40x lens). Blue: DAPI for nuclear staining.



Immunofluorescence analysis of U2OS cells using SLC27A1 Rabbit pAb (TA381622) at dilution of 1:100 (40x lens). Blue: DAPI for nuclear staining.