

Product datasheet for **TA381611S**

SLC25A39 Rabbit Polyclonal Antibody

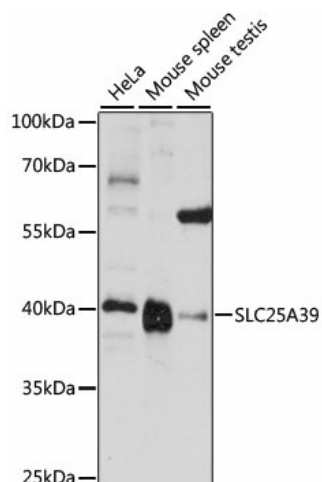
Product data:

Product Type:	Primary Antibodies
Applications:	ELISA, ICC/IF, WB
Recommended Dilution:	WB, 1:200 - 1:2000 IF/ICC, 1:50 - 1:200 ELISA, Recommended starting concentration is 1 µg/mL. Please optimize the concentration based on your specific assay requirements.
Reactivity:	Human, Mouse, Rat
Modifications:	Unmodified
Host:	Rabbit
Isotype:	IgG
Clonality:	Polyclonal
Formulation:	PBS with 0.05% proclin300, 50% glycerol, pH7.3.
Concentration:	lot specific
Purification:	Affinity purification
Conjugation:	Unconjugated
Storage:	Store at -20°C. Avoid freeze / thaw cycles.
Stability:	Shelf life: one year from despatch.
Predicted Protein Size:	39kDa
Gene Name:	solute carrier family 25 member 39
Database Link:	Entrez Gene 51629 Human Q9BZJ4
Background:	This gene encodes a member of the SLC25 transporter or mitochondrial carrier family of proteins. Members of this family are encoded by the nuclear genome while their protein products are usually embedded in the inner mitochondrial membrane and exhibit wide-ranging substrate specificity. Although the encoded protein is currently considered an orphan transporter, this protein is related to other carriers known to transport amino acids. This protein may play a role in iron homeostasis.
Synonyms:	CGI-69; CGI69; FLJ22407



[View online »](#)

Product images:



Western blot analysis of lysates from Rat testis using SLC25A39 Rabbit pAb (TA381611S) at 1:2000 dilution.
 Secondary antibody: HRP-conjugated Goat anti-Rabbit IgG (H+L) (AS014) at 1:10000 dilution.
 Lysates/proteins: 25 µg per lane.
 Blocking buffer: 3% nonfat dry milk in TBST.
 Detection: ECL Basic Kit (RM00020).
 Exposure time: 10s.