

## Product datasheet for **TA381611**

### SLC25A39 Rabbit Polyclonal Antibody

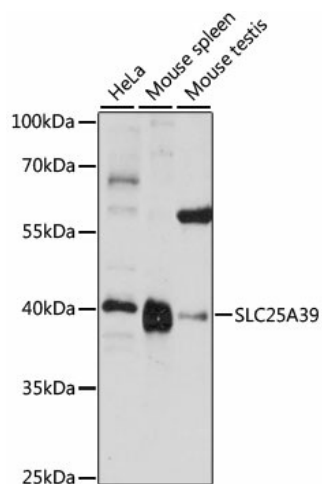
#### Product data:

Product Type:	Primary Antibodies
Applications:	WB
Recommended Dilution:	WB,1:200 - 1:2000
Reactivity:	Human, Mouse
Modifications:	Unmodified
Host:	Rabbit
Isotype:	IgG
Clonality:	Polyclonal
Immunogen:	Recombinant fusion protein containing a sequence corresponding to amino acids 170-250 of human SLC25A39 (NP_057100.1).
Formulation:	PBS with 0.05% proclin300,50% glycerol,pH7.3.
Concentration:	lot specific
Purification:	Affinity purification
Conjugation:	Unconjugated
Storage:	Store at -20°C. Avoid freeze / thaw cycles.
Stability:	Shelf life: one year from despatch.
Predicted Protein Size:	38kDa/39kDa
Gene Name:	solute carrier family 25 member 39
Database Link:	<a href="#">Entrez Gene 51629 Human Q9BZJ4</a>
Background:	This gene encodes a member of the SLC25 transporter or mitochondrial carrier family of proteins. Members of this family are encoded by the nuclear genome while their protein products are usually embedded in the inner mitochondrial membrane and exhibit wide-ranging substrate specificity. Although the encoded protein is currently considered an orphan transporter, this protein is related to other carriers known to transport amino acids. This protein may play a role in iron homeostasis.
Synonyms:	CGI-69; CGI69; FLJ22407



[View online »](#)

## Product images:



Western blot analysis of extracts of various cell lines, using SLC25A39 antibody (TA381611) at 1:1000 dilution. | Secondary antibody: HRP Goat Anti-Rabbit IgG (H+L) at 1:10000 dilution. | Lysates/proteins: 25ug per lane. | Blocking buffer: 3% nonfat dry milk in TBST. | Detection: ECL Basic Kit . | Exposure time: 5s.