

Product datasheet for **TA381609S**

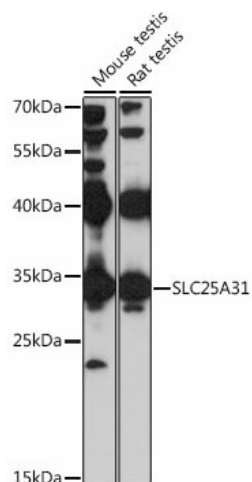
SLC25A31 Rabbit Polyclonal Antibody

Product data:

Product Type:	Primary Antibodies
Applications:	WB
Recommended Dilution:	WB,1:500 - 1:2000
Reactivity:	Mouse, Rat
Modifications:	Unmodified
Host:	Rabbit
Isotype:	IgG
Clonality:	Polyclonal
Immunogen:	A synthetic peptide corresponding to a sequence within amino acids 100-200 of human SLC25A31 (NP_112581.1).
Formulation:	Buffer: PBS with 0.02% sodium azide,50% glycerol,pH7.3.
Concentration:	lot specific
Purification:	Affinity purification
Conjugation:	Unconjugated
Storage:	Store at -20°C. Avoid freeze / thaw cycles.
Stability:	Shelf life: one year from despatch.
Predicted Protein Size:	35kDa
Gene Name:	solute carrier family 25 member 31
Database Link:	Q9H0C2
Background:	The protein encoded by this gene is a member of the ADP/ATP carrier family of proteins that exchange cytosolic ADP for matrix ATP in the mitochondria. Cells over-expressing this gene have been shown to display an anti-apoptotic phenotype. This protein is also thought to play a role in spermatogenesis, where it is believed to associate with a part of the flagellar cytoskeleton and with glycolytic enzymes. Male mice with mutations in the mouse ortholog of this gene are sterile and spermatocytes display an early meiotic arrest phenotype. Alternative splicing results in multiple transcript variants encoding different isoforms.
Synonyms:	AAC4; ANT4; DKFZp434N1235; SFEC; SFEC35kDa



[View online »](#)

Product images:

Western blot analysis of extracts of various cell lines, using SLC25A31 antibody ([TA381609]) at 1:1000 dilution. | Secondary antibody: HRP Goat Anti-Rabbit IgG (H+L) at 1:10000 dilution. | Lysates/proteins: 25ug per lane. | Blocking buffer: 3% nonfat dry milk in TBST. | Detection: ECL Basic Kit . | Exposure time: 30s.