

Product datasheet for **TA381604**

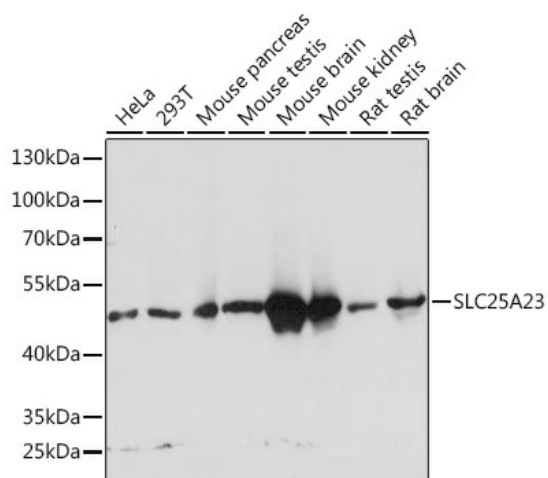
SLC25A23 Rabbit Polyclonal Antibody

Product data:

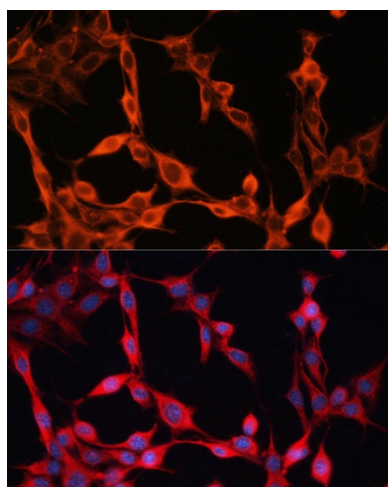
Product Type:	Primary Antibodies
Applications:	ICC/IF, WB
Recommended Dilution:	WB, 1:500 - 1:2000 IF, 1:50 - 1:200
Reactivity:	Human, Mouse, Rat
Modifications:	Unmodified
Host:	Rabbit
Isotype:	IgG
Clonality:	Polyclonal
Immunogen:	Recombinant fusion protein containing a sequence corresponding to amino acids 1-160 of human SLC25A23 (NP_077008.2).
Formulation:	Buffer: PBS with 0.02% sodium azide, 50% glycerol, pH 7.3.
Concentration:	lot specific
Purification:	Affinity purification
Conjugation:	Unconjugated
Storage:	Store at -20°C. Avoid freeze / thaw cycles.
Stability:	Shelf life: one year from despatch.
Predicted Protein Size:	48kDa/49kDa/52kDa/54kDa
Gene Name:	solute carrier family 25 member 23
Database Link:	Entrez Gene 79085 Human Q9BV35
Background:	SLC25A23 (solute carrier family 25 (mitochondrial carrier; phosphate carrier), member 23) is a protein-coding gene. GO annotations related to this gene include calcium ion binding. An important paralog of this gene is SLC25A24.
Synonyms:	APC2; FLJ30339; MCSC2; MGC2615; SCaMC-3; SCAMC3



[View online »](#)

Product images:

Western blot analysis of extracts of various cell lines, using SLC25A23 Rabbit pAb (TA381604) at 1:1000 dilution. | Secondary antibody: HRP Goat Anti-Rabbit IgG (H+L) at 1:10000 dilution. | Lysates/proteins: 25ug per lane. | Blocking buffer: 3% nonfat dry milk in TBST. | Detection: ECL Basic Kit . | Exposure time: 3s.



Immunofluorescence analysis of NIH/3T3 cells using SLC25A23 antibody (TA381604) at dilution of 1:100. Blue: DAPI for nuclear staining.