

Product datasheet for **TA381591S**

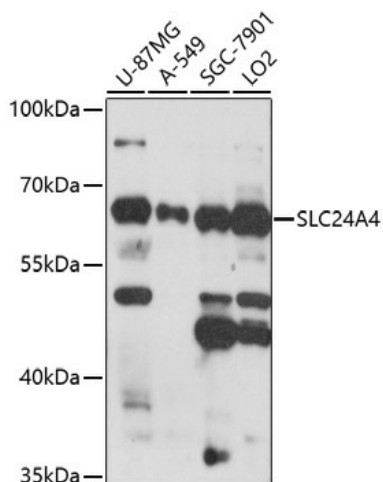
SLC24A4 Rabbit Polyclonal Antibody

Product data:

Product Type:	Primary Antibodies
Applications:	ELISA, WB
Recommended Dilution:	WB, 1:500 - 1:2000 ELISA, Recommended starting concentration is 1 µg/mL. Please optimize the concentration based on your specific assay requirements.
Reactivity:	Human, Mouse, Rat
Host:	Rabbit
Isotype:	IgG
Clonality:	Polyclonal
Formulation:	Buffer: PBS with 0.02% sodium azide, 50% glycerol, pH 7.3.
Concentration:	lot specific
Purification:	Affinity purification
Conjugation:	Unconjugated
Storage:	Store at -20°C. Avoid freeze / thaw cycles.
Stability:	Shelf life: one year from despatch.
Predicted Protein Size:	69kDa
Gene Name:	solute carrier family 24 member 4
Database Link:	Entrez Gene 123041 Human Q8NFF2
Background:	Enables calcium, potassium:sodium antiporter activity. Involved in calcium ion transmembrane transport; potassium ion transmembrane transport; and sodium ion transmembrane transport. Acts upstream of or within cellular calcium ion homeostasis. Part of plasma membrane. Implicated in amelogenesis imperfecta hypomaturation type 2A5.
Synonyms:	FLJ38852; NCKX4; SHEP6; SLC24A2



[View online »](#)

Product images:


Western blot analysis of various lysates using SLC24A4 Rabbit pAb (TA381591S) at 1:1000 dilution.

Secondary antibody: HRP-conjugated Goat anti-Rabbit IgG (H+L) (AS014) at 1:10000 dilution.

Lysates/proteins: 25µg per lane.

Blocking buffer: 3% nonfat dry milk in TBST.

Detection: ECL Enhanced Kit (RM00021).

Exposure time: 90s.