

## Product datasheet for **TA381572S**

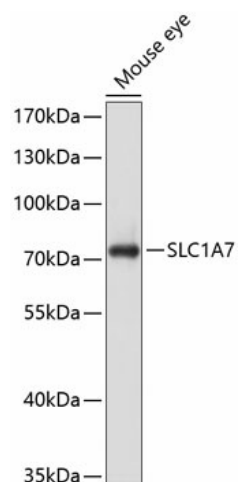
### SLC1A7 Rabbit Polyclonal Antibody

#### Product data:

Product Type:	Primary Antibodies
Applications:	ELISA, WB
Recommended Dilution:	WB, 1:500 - 1:2000 ELISA, Recommended starting concentration is 1 µg/mL. Please optimize the concentration based on your specific assay requirements.
Reactivity:	Mouse
Modifications:	Unmodified
Host:	Rabbit
Isotype:	IgG
Clonality:	Polyclonal
Formulation:	Buffer: PBS with 0.02% sodium azide, 50% glycerol, pH 7.3.
Concentration:	lot specific
Purification:	Affinity purification
Conjugation:	Unconjugated
Storage:	Store at -20°C. Avoid freeze / thaw cycles.
Stability:	Shelf life: one year from despatch.
Predicted Protein Size:	61kDa
Gene Name:	solute carrier family 1 member 7
Database Link:	<a href="#">O00341</a>
Background:	Predicted to enable anion transmembrane transporter activity. Involved in neurotransmitter reuptake. Predicted to be located in plasma membrane. Predicted to be active in glutamatergic synapse. Predicted to be integral component of postsynaptic membrane and integral component of presynaptic membrane.
Synonyms:	AAAT; EAAT5; FLJ36602

[View online »](#)

## Product images:



Western blot analysis of lysates from Mouse eye