

Product datasheet for **TA381571**

EAAT4 (SLC1A6) Rabbit Polyclonal Antibody

Product data:

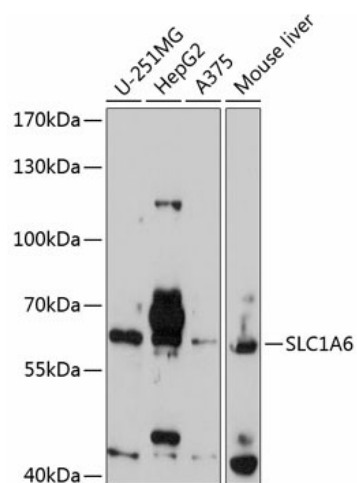
Product Type:	Primary Antibodies
Applications:	WB
Recommended Dilution:	WB,1:500 - 1:1000
Reactivity:	Human, Mouse
Modifications:	Unmodified
Host:	Rabbit
Isotype:	IgG
Clonality:	Polyclonal
Immunogen:	Recombinant fusion protein containing a sequence corresponding to amino acids 155-265 of human SLC1A6 (NP_001259016.1).
Formulation:	Buffer: PBS with 0.02% sodium azide,50% glycerol,pH7.3.
Concentration:	lot specific
Purification:	Affinity purification
Conjugation:	Unconjugated
Storage:	Store at -20°C. Avoid freeze / thaw cycles.
Stability:	Shelf life: one year from despatch.
Predicted Protein Size:	34kDa/61kDa
Gene Name:	solute carrier family 1 member 6
Database Link:	Entrez Gene 6511 Human P48664
Background:	Sodium-dependent, high-affinity amino acid transporter that mediates the uptake of L-glutamate and also L-aspartate and D-aspartate. Functions as a symporter that transports one amino acid molecule together with two or three Na ⁺ ions and one proton, in parallel with the counter-transport of one K ⁺ ion. Mediates Cl ⁻ flux that is not coupled to amino acid transport; this avoids the accumulation of negative charges due to aspartate and Na ⁺ symport (By similarity. Plays a redundant role in the rapid removal of released glutamate from the synaptic cleft, which is essential for terminating the postsynaptic action of glutamate (Probable.



[View online »](#)

Synonyms: EAAT4; MGC33092; MGC43671

Product images:



Western blot analysis of extracts of various cell lines, using SLC1A6 antibody (TA381571) at 1:1000 dilution. | Secondary antibody: HRP Goat Anti-Rabbit IgG (H+L) at 1:10000 dilution. | Lysates/proteins: 25ug per lane. | Blocking buffer: 3% nonfat dry milk in TBST. | Detection: ECL Basic Kit . | Exposure time: 90s.