

## Product datasheet for **TA381565**

### EAAT3 (SLC1A1) Rabbit Polyclonal Antibody

#### Product data:

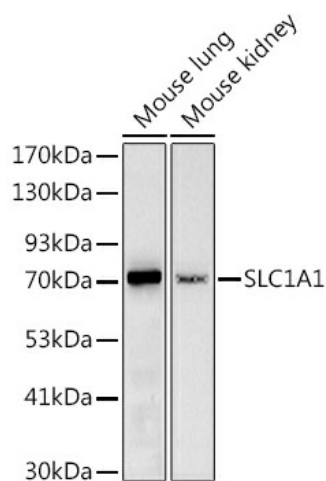
|                         |  |
|-------------------------|--|
| Product Type:           | Primary Antibodies   |
| Applications:           | ICC/IF, WB   |
| Recommended Dilution:   | WB, 1:500 - 1:2000<br>IF, 1:50 - 1:200   |
| Reactivity:             | Human, Mouse, Rat  |
| Modifications:          | Unmodified   |
| Host:                   | Rabbit   |
| Isotype:                | IgG  |
| Clonality:              | Polyclonal   |
| Immunogen:              | Recombinant fusion protein containing a sequence corresponding to amino acids 430-524 of human SLC1A1 (NP_004161.4).   |
| Formulation:            | Buffer: PBS with 0.02% sodium azide, 50% glycerol, pH 7.3.   |
| Concentration:          | lot specific   |
| Purification:           | Affinity purification  |
| Conjugation:            | Unconjugated   |
| Storage:                | Store at -20°C. Avoid freeze / thaw cycles.  |
| Stability:              | Shelf life: one year from despatch.  |
| Predicted Protein Size: | 57kDa  |
| Gene Name:              | solute carrier family 1 member 1   |
| Database Link:          | <a href="#">Entrez Gene 6505 Human P43005</a>  |
| Background:             | This gene encodes a member of the high-affinity glutamate transporters that play an essential role in transporting glutamate across plasma membranes. In brain, these transporters are crucial in terminating the postsynaptic action of the neurotransmitter glutamate, and in maintaining extracellular glutamate concentrations below neurotoxic levels. This transporter also transports aspartate, and mutations in this gene are thought to cause dicarboxylic amino aciduria, also known as glutamate-aspartate transport defect. |



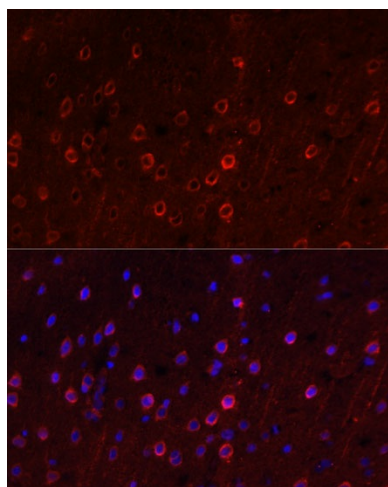
[View online »](#)

Synonyms: EAAC1; EAAT3

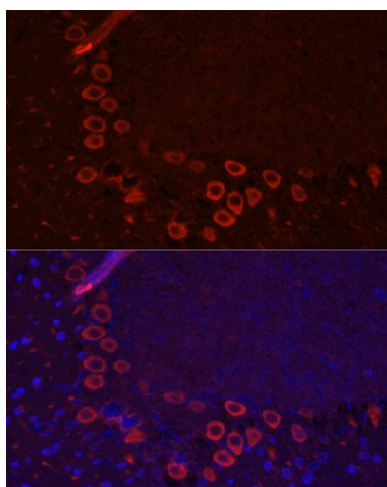
### Product images:



Western blot analysis of extracts of various cell lines, using (TA381565) at 1:1000 dilution. | Secondary antibody: HRP Goat Anti-Rabbit IgG (H+L) at 1:10000 dilution. | Lysates/proteins: 25ug per lane. | Blocking buffer: 3% nonfat dry milk in TBST. | Detection: ECL Basic Kit. | Exposure time: 180s.



Immunofluorescence analysis of rat brain using SLC1A1 antibody (TA381565) at dilution of 1:100. Blue: DAPI for nuclear staining.



Immunofluorescence analysis of mouse brain using SLC1A1 antibody (TA381565) at dilution of 1:100. Blue: DAPI for nuclear staining.