

Product datasheet for **TA381560S**

VGLUT2 (SLC17A6) Rabbit Polyclonal Antibody

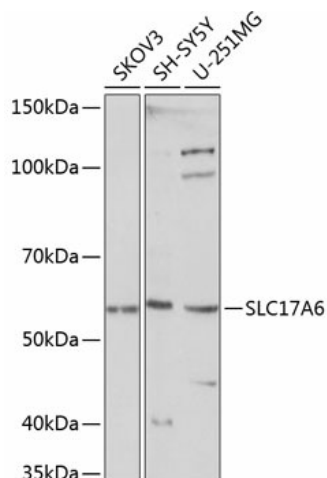
Product data:

Product Type:	Primary Antibodies
Applications:	ELISA, ICC/IF, WB
Recommended Dilution:	WB, 1:500 - 1:2000 IF/ICC, 1:50 - 1:200 ELISA, Recommended starting concentration is 1 µg/mL. Please optimize the concentration based on your specific assay requirements.
Reactivity:	Human, Mouse, Rat
Modifications:	Unmodified
Host:	Rabbit
Isotype:	IgG
Clonality:	Polyclonal
Formulation:	Buffer: PBS with 0.02% sodium azide, 50% glycerol, pH 7.3.
Concentration:	lot specific
Purification:	Affinity purification
Conjugation:	Unconjugated
Storage:	Store at -20°C. Avoid freeze / thaw cycles.
Stability:	Shelf life: one year from despatch.
Predicted Protein Size:	64kDa
Gene Name:	solute carrier family 17 member 6
Database Link:	Entrez Gene 57084 Human Q9P2U8
Background:	Predicted to enable L-glutamate transmembrane transporter activity and neurotransmitter transmembrane transporter activity. Involved in neurotransmitter loading into synaptic vesicle. Predicted to be located in synaptic vesicle. Predicted to be active in excitatory synapse. Predicted to be integral component of synaptic vesicle membrane.
Synonyms:	DNPI; VGLUT2



[View online »](#)

Product images:



Western blot analysis of various lysates using SLC17A6 Rabbit pAb (TA381560) at 1:1000 dilution.

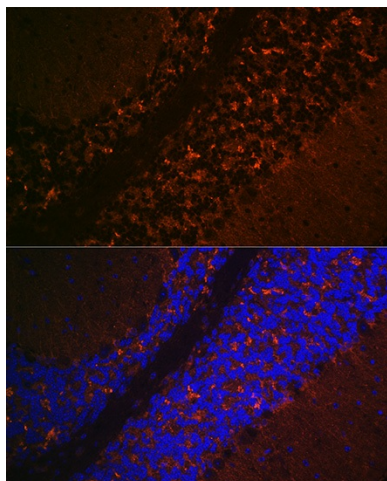
Secondary antibody: HRP-conjugated Goat anti-Rabbit IgG (H+L) (AS014) at 1:10000 dilution.

Lysates/proteins: 25µg per lane.

Blocking buffer: 3% nonfat dry milk in TBST.

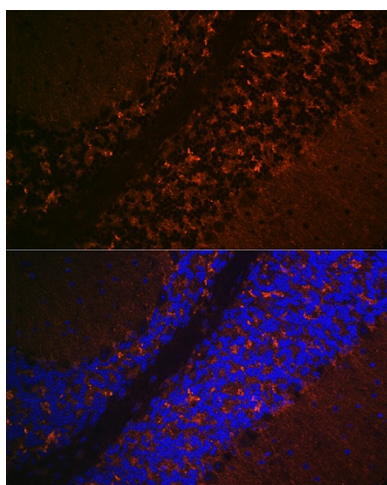
Detection: ECL Basic Kit (RM00020).

Exposure time: 10s.



Immunofluorescence analysis of paraffin-embedded rat brain using SLC17A6 Rabbit pAb (TA381560) at dilution of 1:100 (40x lens).

Secondary antibody: Cy3-conjugated Goat anti-Rabbit IgG (H+L) (AS007) at 1:500 dilution. Blue: DAPI for nuclear staining.



Immunofluorescence analysis of paraffin-embedded mouse brain using SLC17A6 Rabbit pAb ([TA381560]) at dilution of 1:100 (40x lens). Secondary antibody: Cy3-conjugated Goat anti-Rabbit IgG (H+L) (AS007) at 1:500 dilution. Blue: DAPI for nuclear staining.