

Product datasheet for **TA381559**

VGLUT2 (SLC17A6) Rabbit Polyclonal Antibody

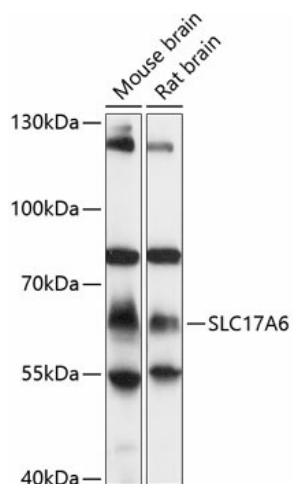
Product data:

Product Type:	Primary Antibodies
Applications:	WB
Recommended Dilution:	WB,1:500 - 1:2000
Reactivity:	Mouse, Rat
Modifications:	Unmodified
Host:	Rabbit
Isotype:	IgG
Clonality:	Polyclonal
Immunogen:	A synthetic peptide corresponding to a sequence within amino acids 500 to the C-terminus of human SLC17A6 (NP_065079.1).
Formulation:	Buffer: PBS with 0.02% sodium azide,50% glycerol,pH7.3.
Concentration:	lot specific
Purification:	Affinity purification
Conjugation:	Unconjugated
Storage:	Store at -20°C. Avoid freeze / thaw cycles.
Stability:	Shelf life: one year from despatch.
Predicted Protein Size:	64kDa
Gene Name:	solute carrier family 17 member 6
Database Link:	Q9P2U8
Background:	SLC17A6 (solute carrier family 17 (vesicular glutamate transporter), member 6) is a protein-coding gene. Diseases associated with SLC17A6 include gnathodiaphyseal dysplasia, and schizophrenia. GO annotations related to this gene include L-glutamate transmembrane transporter activity and symporter activity. An important paralog of this gene is SLC17A7.
Synonyms:	DNPI; VGLUT2



[View online »](#)

Product images:



Western blot analysis of extracts of various cell lines, using SLC17A6 antibody (TA381559) at 1:1000 dilution. | Secondary antibody: HRP Goat Anti-Rabbit IgG (H+L) at 1:10000 dilution. | Lysates/proteins: 25ug per lane. | Blocking buffer: 3% nonfat dry milk in TBST. | Detection: ECL Basic Kit. | Exposure time: 10s.