

## Product datasheet for **TA381556**

### SLC17A1 Rabbit Polyclonal Antibody

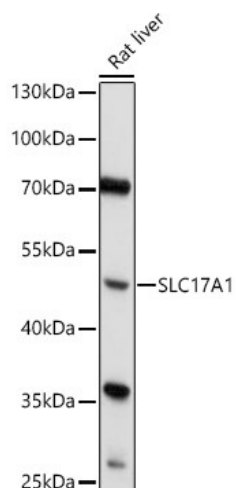
#### Product data:

Product Type:	Primary Antibodies
Applications:	WB
Recommended Dilution:	WB,1:500 - 1:2000
Reactivity:	Rat
Modifications:	Unmodified
Host:	Rabbit
Isotype:	IgG
Clonality:	Polyclonal
Immunogen:	A synthetic peptide corresponding to a sequence within amino acids 1-100 of human SLC17A1 (NP_005065.2).
Formulation:	Buffer: PBS with 0.02% sodium azide,50% glycerol,pH7.3.
Concentration:	lot specific
Purification:	Affinity purification
Conjugation:	Unconjugated
Storage:	Store at -20°C. Avoid freeze / thaw cycles.
Stability:	Shelf life: one year from despatch.
Predicted Protein Size:	44kDa/51kDa
Gene Name:	solute carrier family 17 member 1
Database Link:	<a href="#">Q14916</a>
Background:	Important for the resorption of phosphate by the kidney. May be involved in actively transporting phosphate into cells via Na(+ cotransport in the renal brush border membrane. Plays a role in urate transport in the kidney.
Synonyms:	MGC126794; MGC126796; Na/Pi-4; NAPI-1; NPT-1; NPT1



[View online »](#)

## Product images:



Western blot analysis of extracts of Rat liver, using SLC17A1 antibody (TA381556) at 1:1000 dilution. | Secondary antibody: HRP Goat Anti-Rabbit IgG (H+L) at 1:10000 dilution. | Lysates/proteins: 25ug per lane. | Blocking buffer: 3% nonfat dry milk in TBST. | Detection: ECL Basic Kit . | Exposure time: 60s.