

## Product datasheet for **TA381548S**

### SLC14A1 Rabbit Polyclonal Antibody

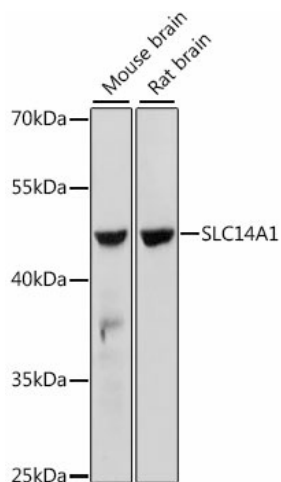
#### Product data:

Product Type:	Primary Antibodies
Applications:	ICC/IF, IHC, WB
Recommended Dilution:	WB,1:500 - 1:2000 IHC,1:100 - 1:200 IF,1:50 - 1:200
Reactivity:	Human, Mouse, Rat
Host:	Rabbit
Isotype:	IgG
Clonality:	Polyclonal
Immunogen:	A synthetic peptide corresponding to a sequence within amino acids 100 to the C-terminus of human SLC14A1 (NP_001295208.1).
Formulation:	Buffer: PBS with 0.02% sodium azide,50% glycerol,pH7.3.
Concentration:	lot specific
Purification:	Affinity purification
Conjugation:	Unconjugated
Storage:	Store at -20°C. Avoid freeze / thaw cycles.
Stability:	Shelf life: one year from despatch.
Predicted Protein Size:	42kDa/48kDa
Gene Name:	solute carrier family 14 member 1 (Kidd blood group)
Database Link:	<a href="#">Entrez Gene 6563 Human Q13336</a>
Background:	The protein encoded by this gene is a membrane transporter that mediates urea transport in erythrocytes. This gene forms the basis for the Kidd blood group system.
Synonyms:	FLJ33745; FLJ41687; HsT1341; HUT11; JK; RACH1; UT-B1; UT1; UTE

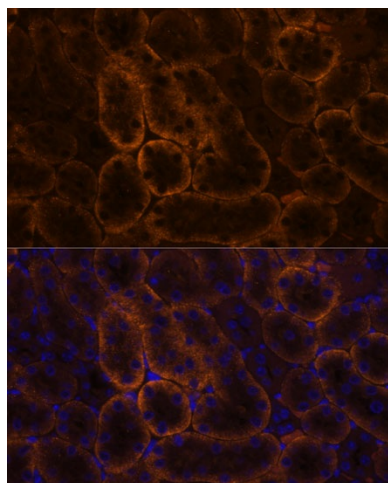


[View online »](#)

## Product images:



Western blot analysis of extracts of various cell lines, using SLC14A1 antibody ([TA381548]) at 1:1000 dilution. | Secondary antibody: HRP Goat Anti-Rabbit IgG (H+L) at 1:10000 dilution. | Lysates/proteins: 25ug per lane. | Blocking buffer: 3% nonfat dry milk in TBST. | Detection: ECL Basic Kit . | Exposure time: 60s.



Immunofluorescence analysis of mouse kidney using SLC14A1 antibody ([TA381548]) at dilution of 1:100. Blue: DAPI for nuclear staining.