

## Product datasheet for **TA381545**

### SLC13A2 Rabbit Polyclonal Antibody

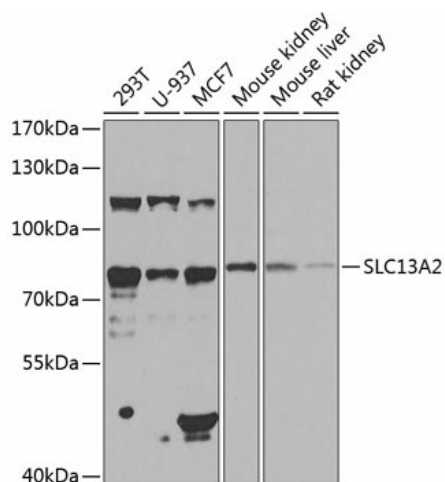
#### Product data:

Product Type:	Primary Antibodies
Applications:	WB
Recommended Dilution:	WB,1:500 - 1:2000
Reactivity:	Human, Mouse, Rat
Modifications:	Unmodified
Host:	Rabbit
Isotype:	IgG
Clonality:	Polyclonal
Immunogen:	Recombinant fusion protein containing a sequence corresponding to amino acids 345-455 of human SLC13A2 (NP_003975.1).
Formulation:	Buffer: PBS with 0.02% sodium azide,50% glycerol,pH7.3.
Concentration:	lot specific
Purification:	Affinity purification
Conjugation:	Unconjugated
Storage:	Store at -20°C. Avoid freeze / thaw cycles.
Stability:	Shelf life: one year from despatch.
Predicted Protein Size:	64kDa/69kDa
Gene Name:	solute carrier family 13 member 2
Database Link:	<a href="#">Entrez Gene 9058 Human Q13183</a>
Background:	The protein encoded by this gene is a sodium-coupled citrate transporter that is regulated by the chaperone activity of cyclophilin b. The encoded protein may play a role in the formation of kidney stones.
Synonyms:	COPT2; CTR2; NaCT; NaDC-1; NADC1; SDCT1



[View online »](#)

## Product images:



Western blot analysis of extracts of various cell lines, using SLC13A2 antibody (TA381545) at 1:1000 dilution. | Secondary antibody: HRP Goat Anti-Rabbit IgG (H+L) at 1:10000 dilution. | Lysates/proteins: 25ug per lane. | Blocking buffer: 3% nonfat dry milk in TBST. | Detection: ECL Enhanced Kit. | Exposure time: 10s.