

Product datasheet for **TA381544**

KCC4 (SLC12A7) Rabbit Polyclonal Antibody

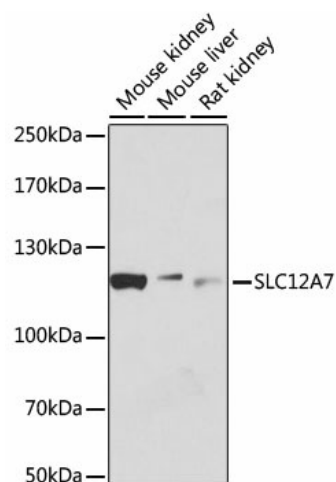
Product data:

Product Type:	Primary Antibodies
Applications:	WB
Recommended Dilution:	WB,1:500 - 1:2000
Reactivity:	Mouse, Rat
Modifications:	Unmodified
Host:	Rabbit
Isotype:	IgG
Clonality:	Polyclonal
Immunogen:	Recombinant fusion protein containing a sequence corresponding to amino acids 1-70 of human SLC12A7 (NP_006589.2).
Formulation:	Buffer: PBS with 0.02% sodium azide,50% glycerol,pH7.3.
Concentration:	lot specific
Purification:	Affinity purification
Conjugation:	Unconjugated
Storage:	Store at -20°C. Avoid freeze / thaw cycles.
Stability:	Shelf life: one year from despatch.
Predicted Protein Size:	28kDa/119kDa
Gene Name:	solute carrier family 12 member 7
Database Link:	Q9Y666
Background:	Mediates electroneutral potassium-chloride cotransport when activated by cell swelling. May mediate K ⁽⁺⁾ uptake into Deiters' cells in the cochlea and contribute to K ⁽⁺⁾ recycling in the inner ear. Important for the survival of cochlear outer and inner hair cells and the maintenance of the organ of Corti. May be required for basolateral Cl ⁽⁻⁾ extrusion in the kidney and contribute to renal acidification (By similarity).
Synonyms:	DKFZP434F076; KCC4



[View online »](#)

Product images:



Western blot analysis of extracts of various cell lines, using SLC12A7 antibody (TA381544) at 1:1000 dilution. | Secondary antibody: HRP Goat Anti-Rabbit IgG (H+L) at 1:10000 dilution. | Lysates/proteins: 25ug per lane. | Blocking buffer: 3% nonfat dry milk in TBST. | Detection: ECL Basic Kit . | Exposure time: 30s.