

## Product datasheet for **TA381537**

### SLC10A2 Rabbit Polyclonal Antibody

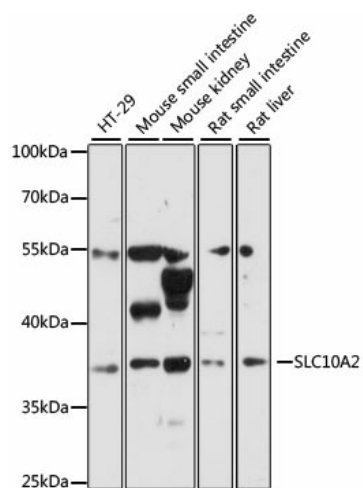
#### Product data:

Product Type:	Primary Antibodies
Applications:	WB
Recommended Dilution:	WB,1:500 - 1:2000
Reactivity:	Human, Mouse, Rat
Modifications:	Unmodified
Host:	Rabbit
Isotype:	IgG
Clonality:	Polyclonal
Immunogen:	Recombinant fusion protein containing a sequence corresponding to amino acids 289-348 of human SLC10A2 (NP_000443.1).
Formulation:	Buffer: PBS with 0.02% sodium azide,50% glycerol,pH7.3.
Concentration:	lot specific
Purification:	Affinity purification
Conjugation:	Unconjugated
Storage:	Store at -20°C. Avoid freeze / thaw cycles.
Stability:	Shelf life: one year from despatch.
Predicted Protein Size:	37kDa
Gene Name:	solute carrier family 10 member 2
Database Link:	<a href="#">Entrez Gene 6555 Human Q12908</a>
Background:	This gene encodes a sodium/bile acid cotransporter. This transporter is the primary mechanism for uptake of intestinal bile acids by apical cells in the distal ileum. Bile acids are the catabolic product of cholesterol metabolism, so this protein is also critical for cholesterol homeostasis. Mutations in this gene cause primary bile acid malabsorption (PBAM); mutations in this gene may also be associated with other diseases of the liver and intestines, such as familial hypertriglyceridemia (FHTG).
Synonyms:	ASBT; IBAT; ISBT; NTCP2



[View online »](#)

## Product images:



Western blot analysis of extracts of various cell lines, using SLC10A2 antibody (TA381537) at 1:3000 dilution. | Secondary antibody: HRP Goat Anti-Rabbit IgG (H+L) at 1:10000 dilution. | Lysates/proteins: 25ug per lane. | Blocking buffer: 3% nonfat dry milk in TBST. | Detection: ECL Basic Kit. | Exposure time: 30s.