

Product datasheet for **TA381530S**

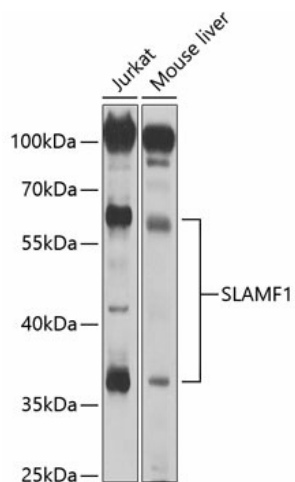
SLAMF1 Rabbit Polyclonal Antibody

Product data:

Product Type:	Primary Antibodies
Applications:	WB
Recommended Dilution:	WB,1:500 - 1:2000
Reactivity:	Human, Mouse
Modifications:	Unmodified
Host:	Rabbit
Isotype:	IgG
Clonality:	Polyclonal
Immunogen:	Recombinant fusion protein containing a sequence corresponding to amino acids 21-237 of human SLAMF1 (NP_003028.1).
Formulation:	Buffer: PBS with 0.02% sodium azide,50% glycerol,pH7.3.
Concentration:	lot specific
Purification:	Affinity purification
Conjugation:	Unconjugated
Storage:	Store at -20°C. Avoid freeze / thaw cycles.
Stability:	Shelf life: one year from despatch.
Predicted Protein Size:	33kDa/37kDa/40kDa
Gene Name:	signaling lymphocytic activation molecule family member 1
Database Link:	Entrez Gene 6504 Human Q13291
Background:	SLAM-induced signal-transduction events in T-lymphocytes are different from those in B-cells. Two modes ofSLAM signaling are likely to exist: one in which the inhibitor SH2D1A acts as a negative regulator and another inwhich protein-tyrosine phosphatase 2C (PTPN11)-dependent signal transduction operates.
Synonyms:	CD150; CDw150; IPO-3; SLAM



[View online »](#)

Product images:

Western blot analysis of extracts of various cell lines, using SLAMF1 antibody ([TA381530]) at 1:1000 dilution. | Secondary antibody: HRP Goat Anti-Rabbit IgG (H+L) at 1:10000 dilution. | Lysates/proteins: 25ug per lane. | Blocking buffer: 3% nonfat dry milk in TBST. | Detection: ECL Basic Kit . | Exposure time: 5s.