

Product datasheet for **TA381496**

Snf1lk (SIK1) Rabbit Polyclonal Antibody

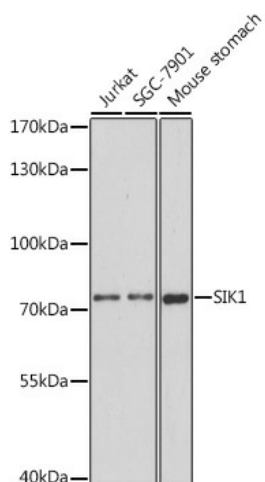
Product data:

Product Type:	Primary Antibodies
Applications:	WB
Recommended Dilution:	WB,1:500 - 1:2000
Reactivity:	Human, Mouse
Modifications:	Unmodified
Host:	Rabbit
Isotype:	IgG
Clonality:	Polyclonal
Immunogen:	A synthetic peptide corresponding to a sequence within amino acids 1-100 of human SIK1 (NP_775490.2).
Formulation:	Buffer: PBS with 0.02% sodium azide,50% glycerol,pH7.3.
Concentration:	lot specific
Purification:	Affinity purification
Conjugation:	Unconjugated
Storage:	Store at -20°C. Avoid freeze / thaw cycles.
Stability:	Shelf life: one year from despatch.
Predicted Protein Size:	84kDa
Gene Name:	salt inducible kinase 1
Database Link:	Entrez Gene 150094 Human P57059
Background:	This gene encodes a serine/threonine protein kinase that contains a ubiquitin-associated (UBA) domain. The encoded protein is a member of the adenosine monophosphate-activated kinase (AMPK) subfamily of kinases that play a role in conserved signal transduction pathways. A mutation in this gene is associated with early infantile epileptic encephalopathy 30.
Synonyms:	msk; SIK; SIK-1; SNF1LK



[View online »](#)

Product images:



Western blot analysis of extracts of various cell lines, using SIK1 antibody (TA381496) at 1:1000 dilution. | Secondary antibody: HRP Goat Anti-Rabbit IgG (H+L) at 1:10000 dilution. | Lysates/proteins: 25ug per lane. | Blocking buffer: 3% nonfat dry milk in TBST. | Detection: ECL Basic Kit . | Exposure time: 150s.